



GOMMAIRE  
organic living



INDOOR 2024





## INTRO

GOMMAIRE - Organic Living is a Belgian brand that brings you a vast collection of interior and exterior furniture, as well as a wide array of decorative items.

From authentic and teak wood tables and chairs to first-rate upholstered sofas, lounge sets, matching accessories and more: our brand has all the right ingredients to make a house into a home. Our timeless, organic and unique pieces will provide you with a lifetime of enjoyment in a highly qualitative and exclusive setting.

Almost everything in our collections has been conceived and created by our own designers, including CEO Laurent De Greef. The innovative, nature-inspired designs by their hand and the traditional techniques that are used to make them come to life, merge into the masterful result that is GOMMAIRE.

Browse through this catalogue, be visually indulged and discover our brand for yourself.



## OUR STORY

GOMMAIRE - Organic Living started off with the dream of seeing a Belgian line of furniture come to life. In January 2015, every effort was made to see it come true. Today our brand has surpassed even our wildest dreams: from a small Belgian furniture brand with big aspirations to an established player in the international interior and exterior market. And we are working hard to continue growing, so our furniture can be enjoyed across the globe.

With our furniture and decoration design, we aim to tell a story. A story in which timeless, unique and qualitative enjoyment is the common thread. In which nature plays its role as protagonist with fervour, as it is preserved in the shapes and materials of our designs. And in which the individual pieces of furniture, like separate story lines, come together to form a strong, organic overall concept.

The tellers of that story are the people who have shaped GOMMAIRE and continue to do so to this day. From management to employees to everyone who markets the brand and its products: we are passionate about our trade, committed to continuously improve and willing to go the extra mile for our customers.

GOMMAIRE is more than furniture. It is an experience. It is a beautiful contrast between creative innovation and traditional craftsmanship. It is enjoying life in a sustainable, timeless and exclusive atmosphere.



## OUR PEOPLE

Our home based Belgian team is reinforced by skilled artisans who expertly and passionately bring our designs to life, using the local traditions and natural resources of India, Indonesia, Morocco and Portugal. It is their masterful craftsmanship that inserts artisanal charm and authenticity into our collections.

GOMMAIRE runs on drive, professionalism and most of all teamwork. It is the minds of our inhouse designers that conceive innovative organic creations. It is the hands of our experienced craftsmen that capture the essence of nature's beauty in these designs. And it is the passion of our entire team that convinces people all over the world to hear our story, to experience our pieces, to live our brand.





## THE GOMMAIRE INDOOR COLLECTION

Teak, solid oak and reclaimed wood effortlessly blend together with high-quality fabrics and expertly woven rattan into an exquisite celebration of timeless interior design. Combining these materials with organic lines, shapes and textures, our indoor furniture captures nature's essence and brings it indoors for you to enjoy.

From handcrafted tables, chairs and cabinets that will help you host delicious dinners to upholstered sofas and pouffes to cosy up in with family and friends: with the indoor collection of GOMMAIRE, it is without difficulty to construct a warm and unique interior that can be lived in to the fullest.

Depending on your preference, you can opt for our designs in stylish, dark fume and anthracite teak wood, or choose for the warmer brown hue of the authentic grey and original aged patine teak items. All of our teak wood contains variations in structure and colour due to their recycled nature and the fact we leave the material mostly untreated, which makes each item one of a kind. Our luxurious solid French oak offers the same uniqueness. One thing is guaranteed: our selection of wood meets the highest of standards.

Our passion for seating comfort is reflected in our upholstered sofas, chairs and cushions. To ensure the highest possible quality and find the right fit for every GOMMAIRE design, we design and handpick all fabrics ourselves. Moreover, they are all locally manufactured in Europe and our selection is updated regularly. Discover the current fabric selection from page 128 onwards.

Experience our entire indoor collection on the following pages. Be inspired by the carefully selected settings and discover more details about the indoor designs in the technical specifications section, starting from page 134. Maintenance advice can be found from page 172 onwards.



## TABLE OF CONTENTS

Living area	14
Dining area	64
Accessories	96
Fabric selection	128
Technical specifications	134
Care & use	172
General terms & conditions of sale	182



THE ACTUAL COLOURS MAY VARY FROM IMAGES SHOWN.  
DIMENSIONS ARE INDICATIVE AND MAY DIFFER FROM REALITY.





## LIVING AREA

The purpose of a living area is to have a space in which you can unwind and enjoy blissful mornings, lazy days and cosy evenings. Both comfort and class are key to that.

The centrepiece of a living area is an elegant and comfortable sofa. Let that be just the thing we are most passionate about: we attach tremendous value to the right combination of design, seating comfort and fabrics of the highest quality. That results in sensational upholstered sofas, pouffes, armchairs and matching deco cushions.

Depending on the design, there are various upholstery options available. Discover the fabric codes in the technical specifications section (p. 134) and find the corresponding ones in our fabric selection (p. 128) to know the range you can choose from.

With the addition of coffee tables, cabinets and consoles in reclaimed teak wood or solid French oak, the room will truly come together. Combine our stylish anthracite or fume coloured pieces or opt for the ones in warmer oak, authentic grey or original aged patine. The variations in texture and colour in all pieces in these materials, makes them different and remarkable.

Find inspiration in the living room settings on the following pages. All technical specifications, fabric customisation options and maintenance advice can be found at the end of the catalogue.



THE ACTUAL COLOURS MAY VARY FROM IMAGES SHOWN,  
DIMENSIONS ARE INDICATIVE AND MAY DIFFER FROM REALITY.







SQUARE COFFEE TABLE CUBIC | P. 160 | CONSOLE ARCHIE | P. 164 | SOFA FERRE 3-SEATER | P. 140

It is in the details the organic uniqueness of our pieces lies. The splendour of nature's finest wood grains, the raw unevenness of natural stone, meticulously woven fabrics with compelling colour variations and the delightful shapes and rough patches characteristic of handmade terracotta. All it takes to stand in awe is a closer look.

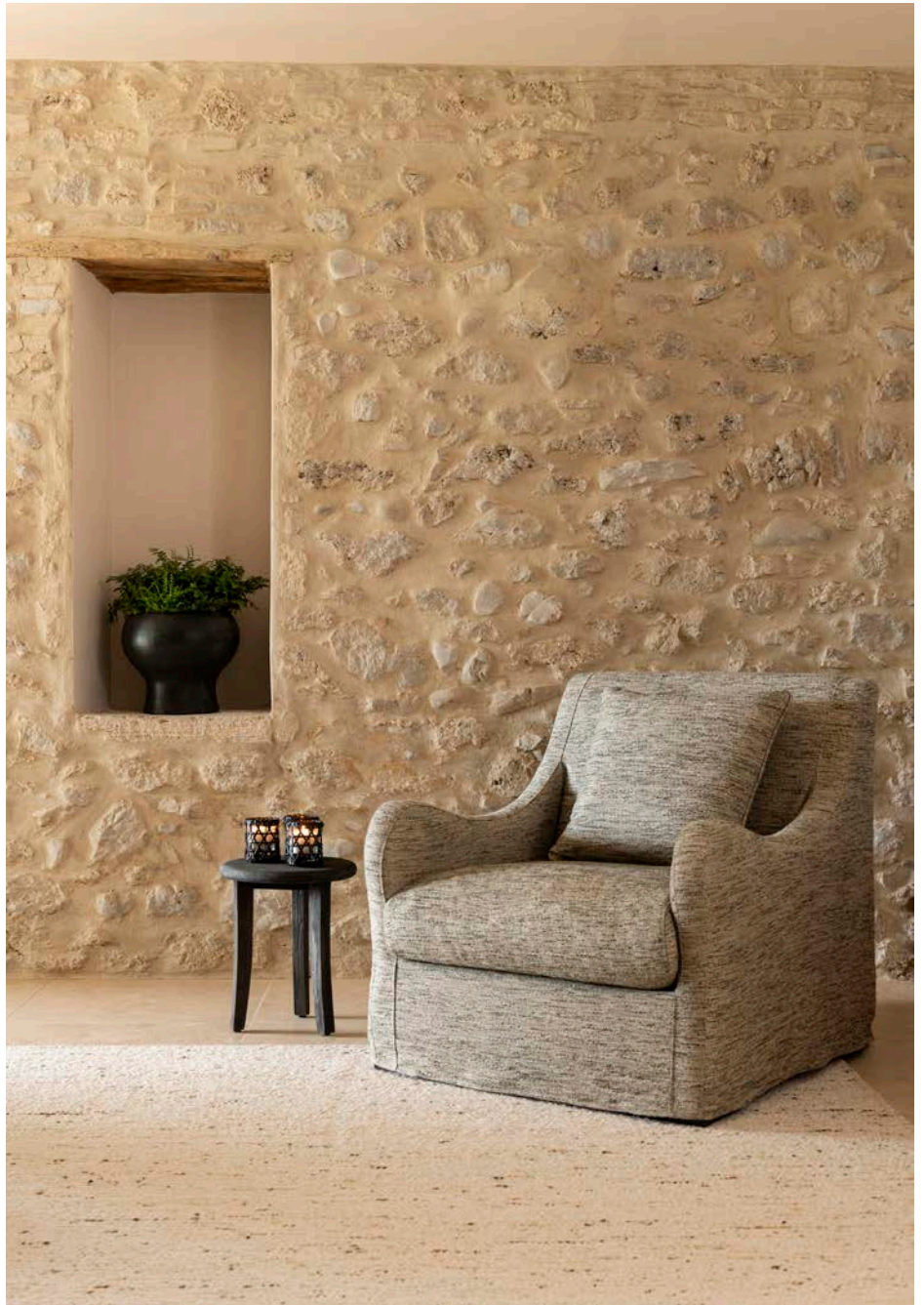


SOFA ANTHONY 3-SEATER | P. 136 | POUFFE NATHAN SMALL GREEN | P. 144 | COFFEE TABLE BRUCE | P. 159





CHAISE LONGUE ANTHONY RIGHT ARM | P. 136 | DECO CUSHIONS | P. 169



SOFA BERNARD 1-SEATER WITH COVER | P. 137 | STOOL YANNICK | P. 148





MODULAR SOFA FERRE | P. 138 - 139





Apart from quality and organic class, practicality is paramount. A true testament to versatility and innovation in design, our modular sofas meet this need with all their possible combinations.





EASY CHAIR SALLY OPEN WEAVE | P. 142 | CUSHION EASY CHAIR SALLY OPEN WEAVE | P. 142 | COFFEE TABLE DAY LARGE | P. 161  
SOFA FERRE 3-SEATER | P. 140 | DECO CUSHIONS | P. 169





The various materials that make up our pieces, such as natural rattan, teak wood, mouth-blown glass and various structured fabrics can be combined effortlessly. Inspired by nature's diverse elements, our furniture transforms a living area into a captivating symphony of shapes, textures and aesthetics.







SOFA FERRE 1-SEATER | P. 140 | CONSOLE ARCHIE | P. 164 | SQUARE COFFEE TABLE ARCHIE | P. 158



SOFA WABI | P. 141 | CUSHION SET WABI SOFA | P. 141 | WABI COFFEE TABLE | P. 161  
WABI COFFEE TABLE SMALL | P. 161 | CLUB NATHAN WITH SWIVEL GREEN | P. 143







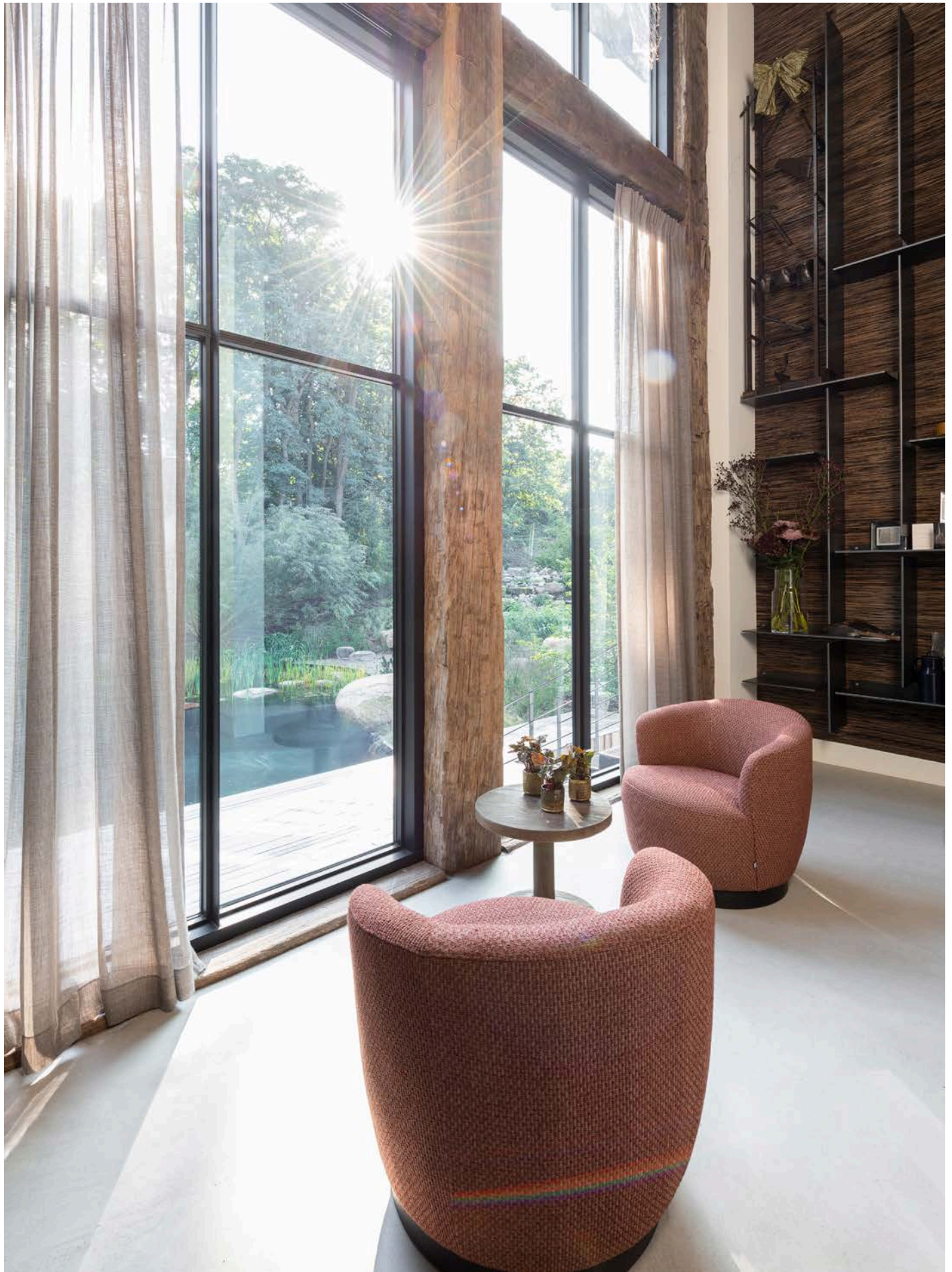
EASY CHAIR SALLY UPHOLSTERED | P. 142



SIDE CHAIR CAROL | P. 141 | CUSHION SEAT SIDE CHAIR CAROL (DECO CUSHIONS NOT INCLUDED) | P. 141



CLUB NATHAN WITH SWIVEL TERRACOTTA | P. 143 | ROUND SIDE TABLE PHIL SMALL | P. 162







MODULAR SOFA SET DEAN | P. 141 | ROUND SIDE TABLE PHIL SMALL - MEDIUM - LARGE | P. 162  
PLANTER BASKET NELSON SMALL - LARGE | P. 166 | SOFA FERRE 1-SEATER | P. 140 | FERRE OTTOMAN SMALL | P. 138 | THROW SAND | P. 168



MODULAR SOFA SET DEAN | P. 141 | SQUARE COFFEE TABLE ARCHIE | P. 158 | DECO CUSHIONS | P. 169 | THROW BEIGE | P. 168



Soft shapes blend beautifully with high-quality fabrics. Their earthy tones reminiscent of sun-kissed landscapes and the gentle embrace of a misty morning, evoke a sense of peace. Combined with the comfort of our upholstered sofas, a soothing ambience that nurtures relaxation is captured.







SOFA DEAN | P. 140 | RECTANGULAR COFFEE TABLE DRAKE SMALL | P. 159

Unwinding should be a matter of course. With GOMMAIRE furniture, it is. The fusion of softness and structure invites one to sink into the cosy embrace of an upholstered sofa, while being surrounded by a timeless and unique atmosphere.



SOFA NEIL 3-SEATER | P. 140 | COFFEE TABLE ARCHIE LARGE | P. 158 | THROW SAND | P. 168





CLUB NATHAN WITH SWIVEL GREEN | P. 143 | POUFFE NATHAN LARGE GREEN | P. 145 | MIRROR BOLD RECTANGULAR LARGE | P. 167



POUFFE NATHAN LARGE GREEN | P. 145 | POUFFE NATHAN SMALL SAND | P. 144  
POUFFE NATHAN LARGE TERRACOTTA | P. 145 | POUFFE NATHAN SMALL GREEN | P. 144



CLUB MASON WITH SWIVEL | P. 142 | ROUND SIDE TABLE PHIL SMALL | P. 162









DRESSOIR TRACY | P. 151

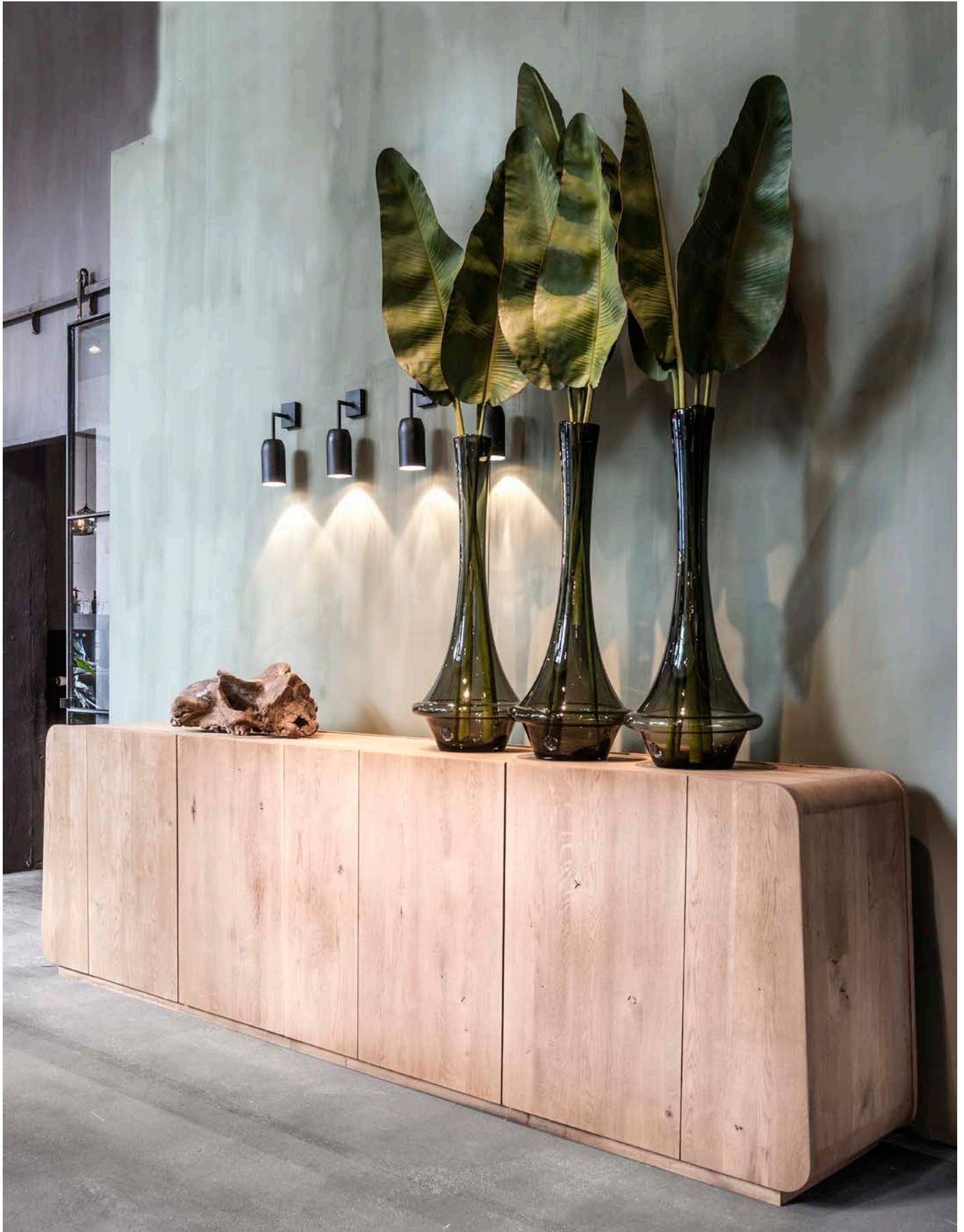


DRESSOIR ABEL | P. 152





CABINET VINCENT | P. 150



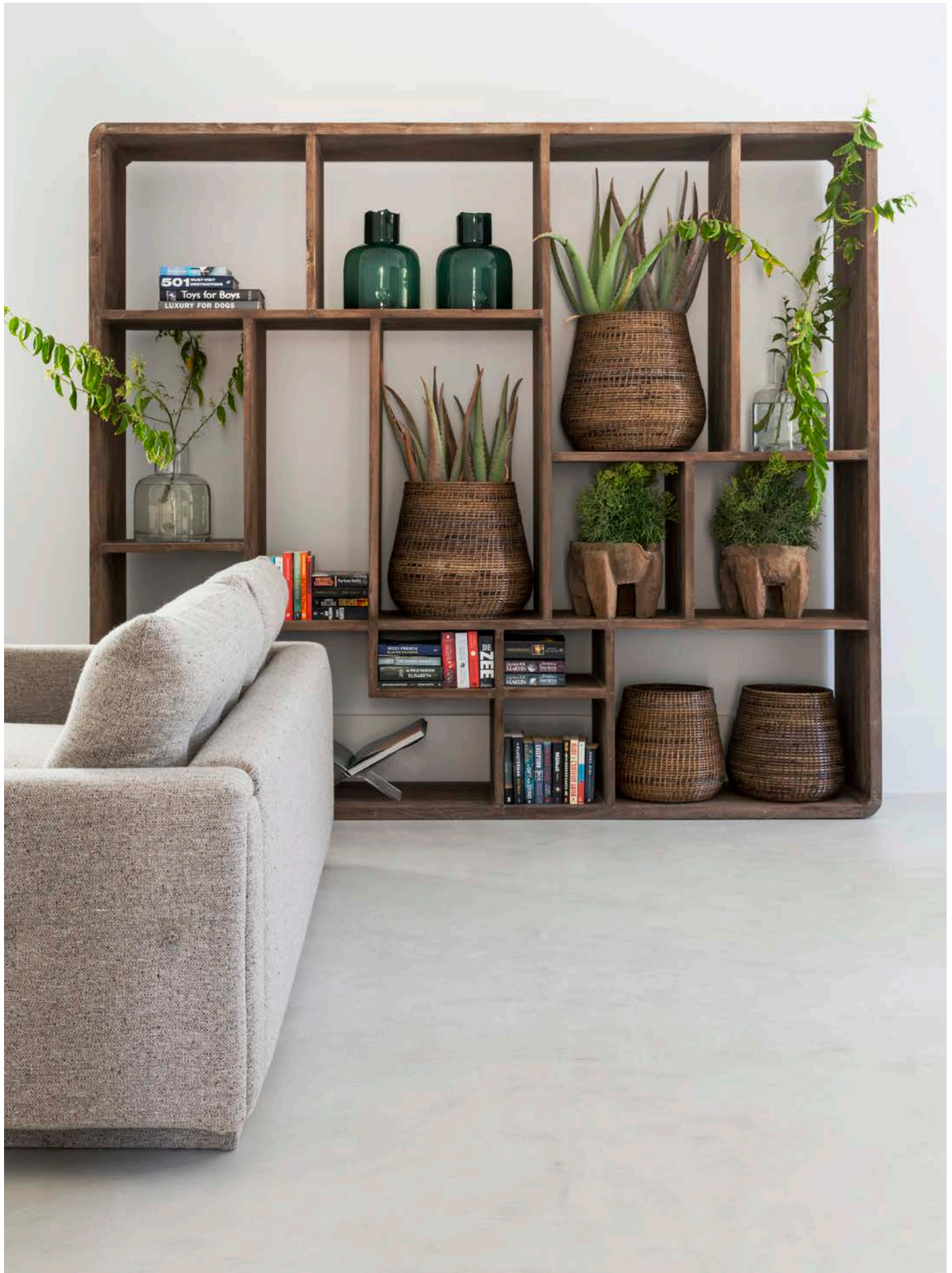
DRESSOIR VINCENT | P. 151

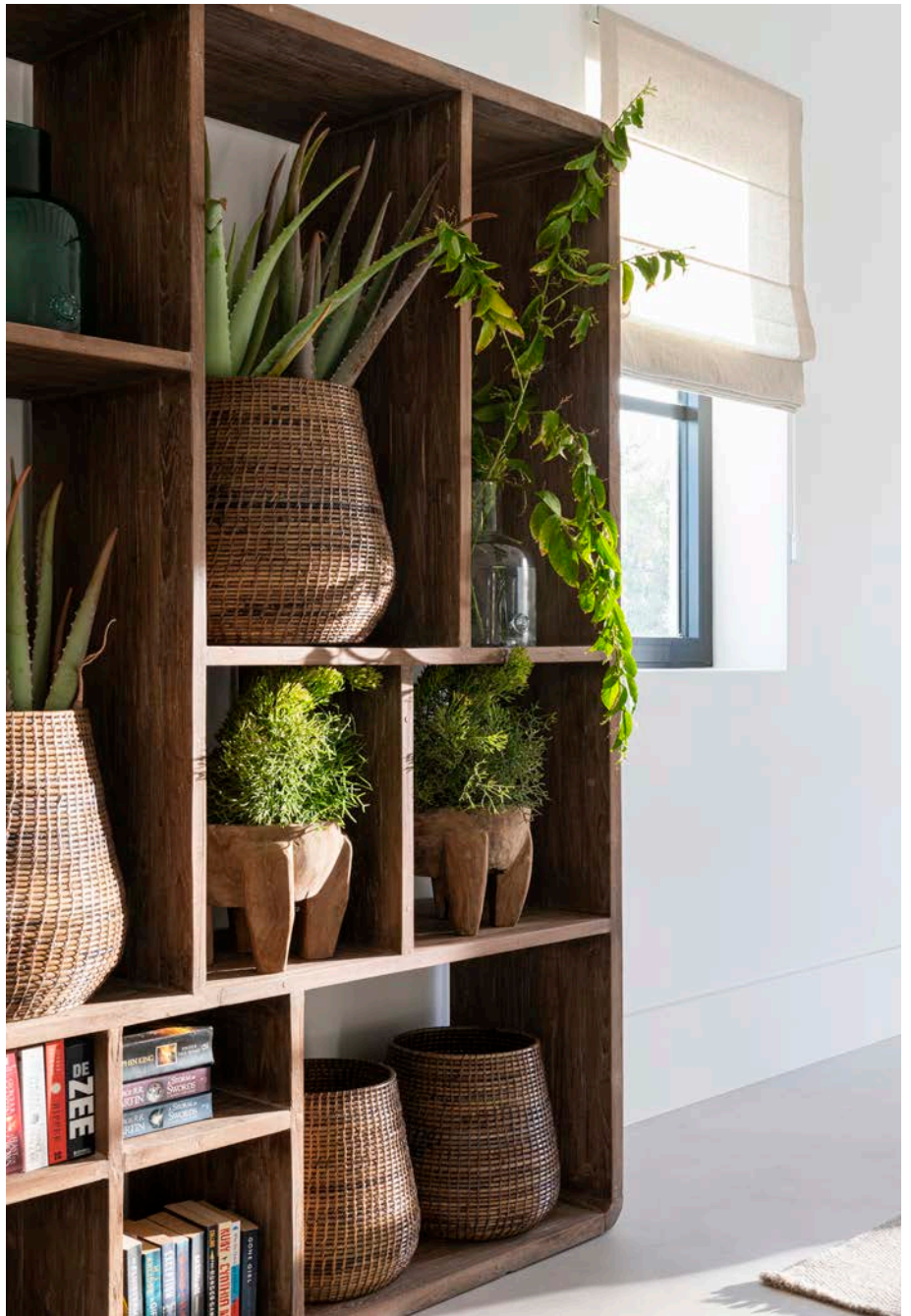






DRESSOIR CUBIC | P. 152





SOFA NEIL 3-SEATER | P. 140 | CABINET SAAR LARGE | P. 151



RACK JEAN | P. 153



DISPLAY DIZZY | P. 151 | SOFA FERRE 1-SEATER | P. 140 | FERRE OTTOMAN SMALL | P. 138





## DINING AREA

One of the greatest joys in life is sharing memorable moments with family and friends, and the majority of these are spent around the dinner table. Be it for holiday family gatherings, lovely lunches and delicious dinners with loved ones or fun game nights with friends: a table with chairs placed all around forms the foundation for many precious memories.

We have a wide range of tables, chairs, stools, cabinets and accessories to choose from. Create a feast for your senses by combining designs in various textures, colours and materials such as natural, anthracite or fume teak, solid oak, fabrics, rattan and more.

Let your spark for interior design be ignited by the dining settings on the following pages. All technical specifications, fabric customisation options and maintenance advice can be found at the end of the catalogue.





THE ACTUAL COLOURS MAY VARY FROM IMAGES SHOWN,  
DIMENSIONS ARE INDICATIVE AND MAY DIFFER FROM REALITY.



ARMCHAIR FAYE UPHOLSTERED | P. 146 | ROUND TABLE ANTOINETTE | P. 157



ARMCHAIR FAYE UPHOLSTERED | P. 146 | TABLE ARCHIE LARGE | P. 158



ARMCHAIR FAYE UPHOLSTERED | P. 146 | ROUND TABLE FLOOR | P. 155







CABINET VINCENT | P. 150 | TABLE SYLVIA | P. 157



The centrepiece of a dining area is a table surrounded by a group of inviting chairs. Marrying natural materials with exquisite craftsmanship, a sense of warmth and class is accomplished.









CHAIR CAROL | P. 146



ARMCHAIR JACKY | P. 147 | SQUARE TABLE ARCHIE | P. 158 | RECTANGULAR RUG NIMROD BEIGE | P. 170





Whether gathered for a delicious meal or enjoying quiet moments of contemplation, our tables and chairs form a connection to the natural world, making every dining experience an enchanting journey through the wondrous union of nature and design.



CHAIR JERRY ON WHEELS UPHOLSTERED | P. 147 | DRAKE DINING TABLE | P. 156 | CABINET CUBIC | P. 153

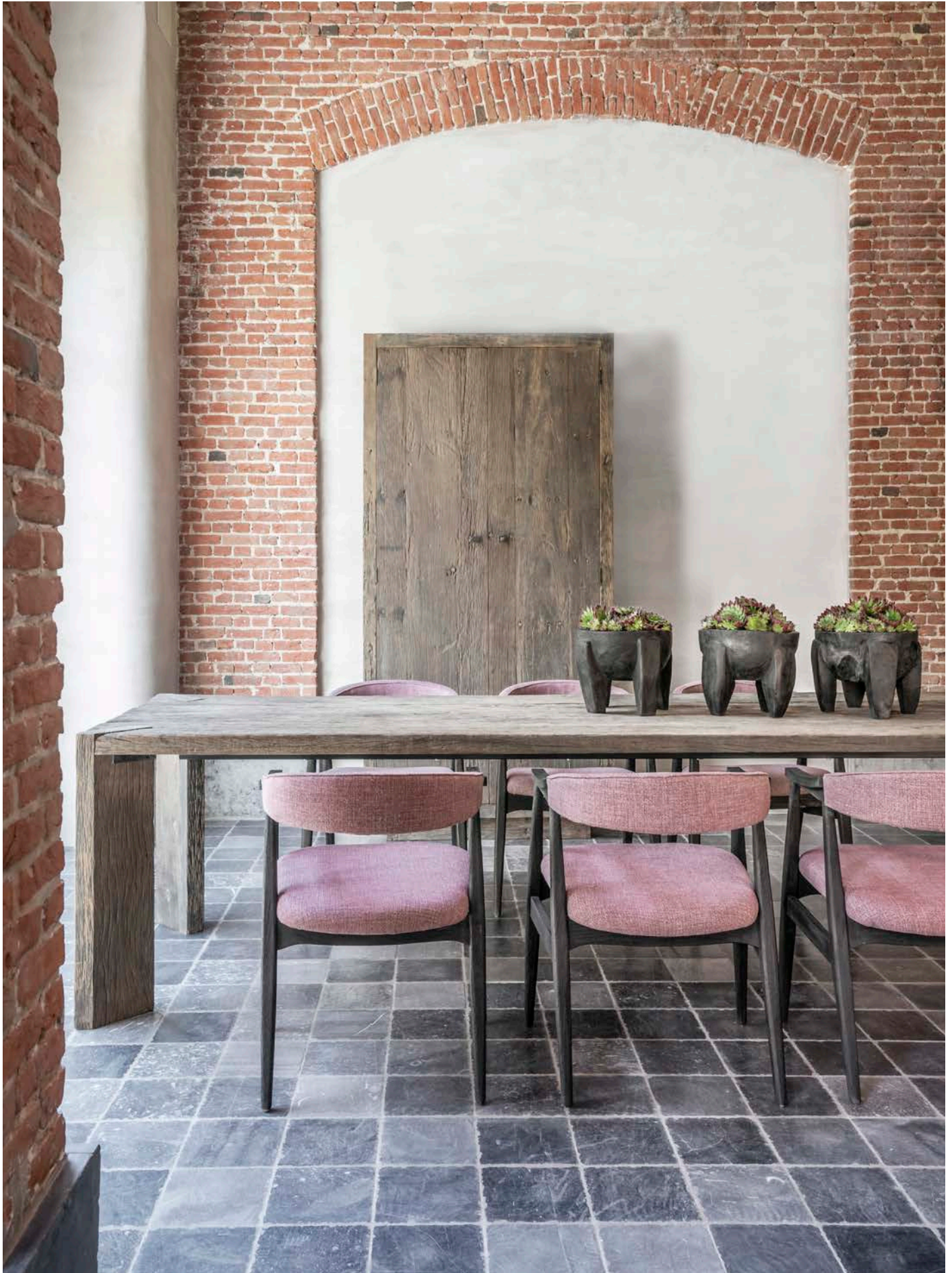


CHAIR ALBA | P. 146 | CUSHION CHAIR ALBA | P. 146





CHAIR ALBA | P. 146 | TABLE JUSTIN LARGE | P. 154







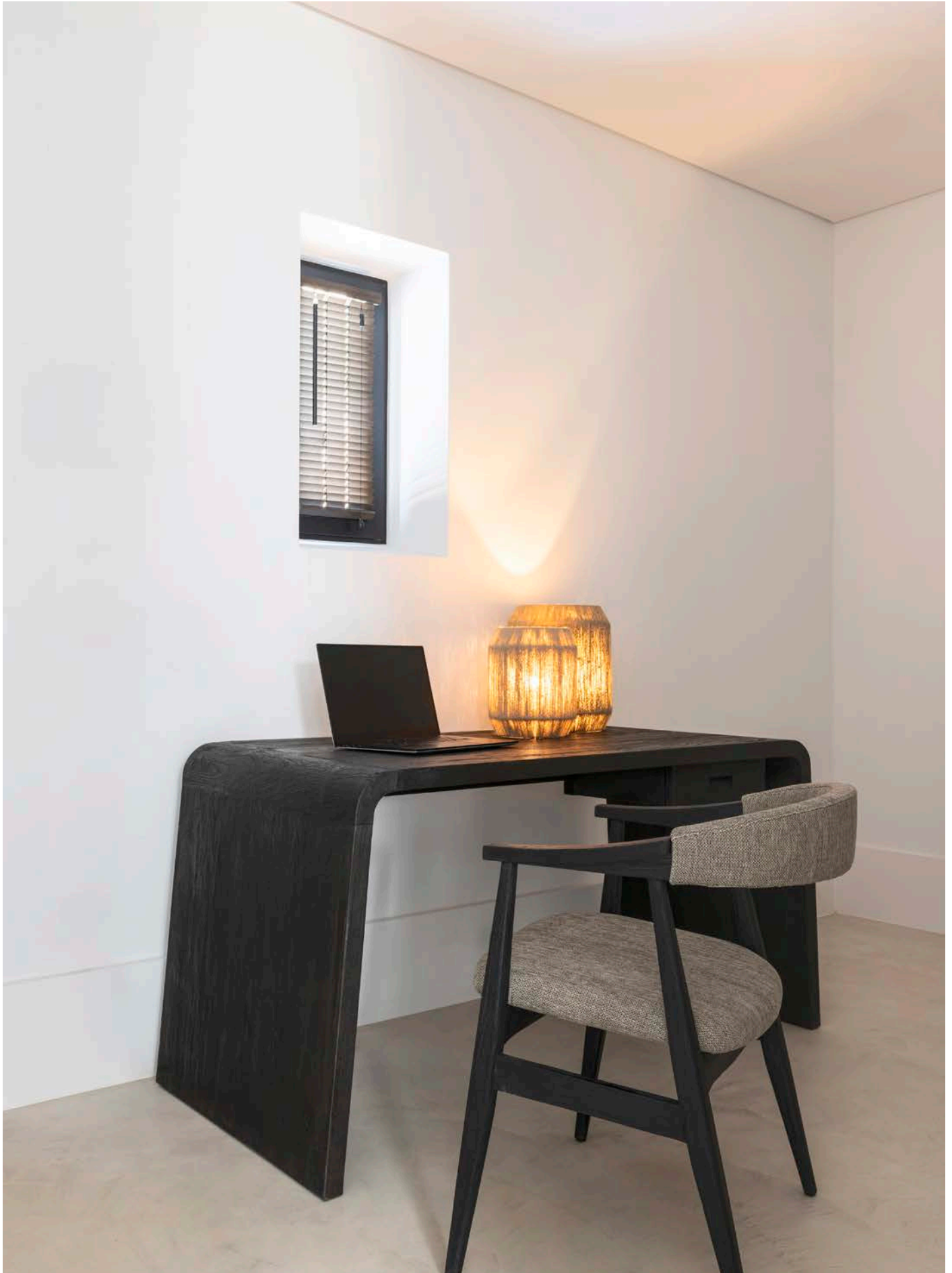
CHAIR SALLY UPHOLSTERED | P. 147 | OVAL TABLE DAN | P. 155







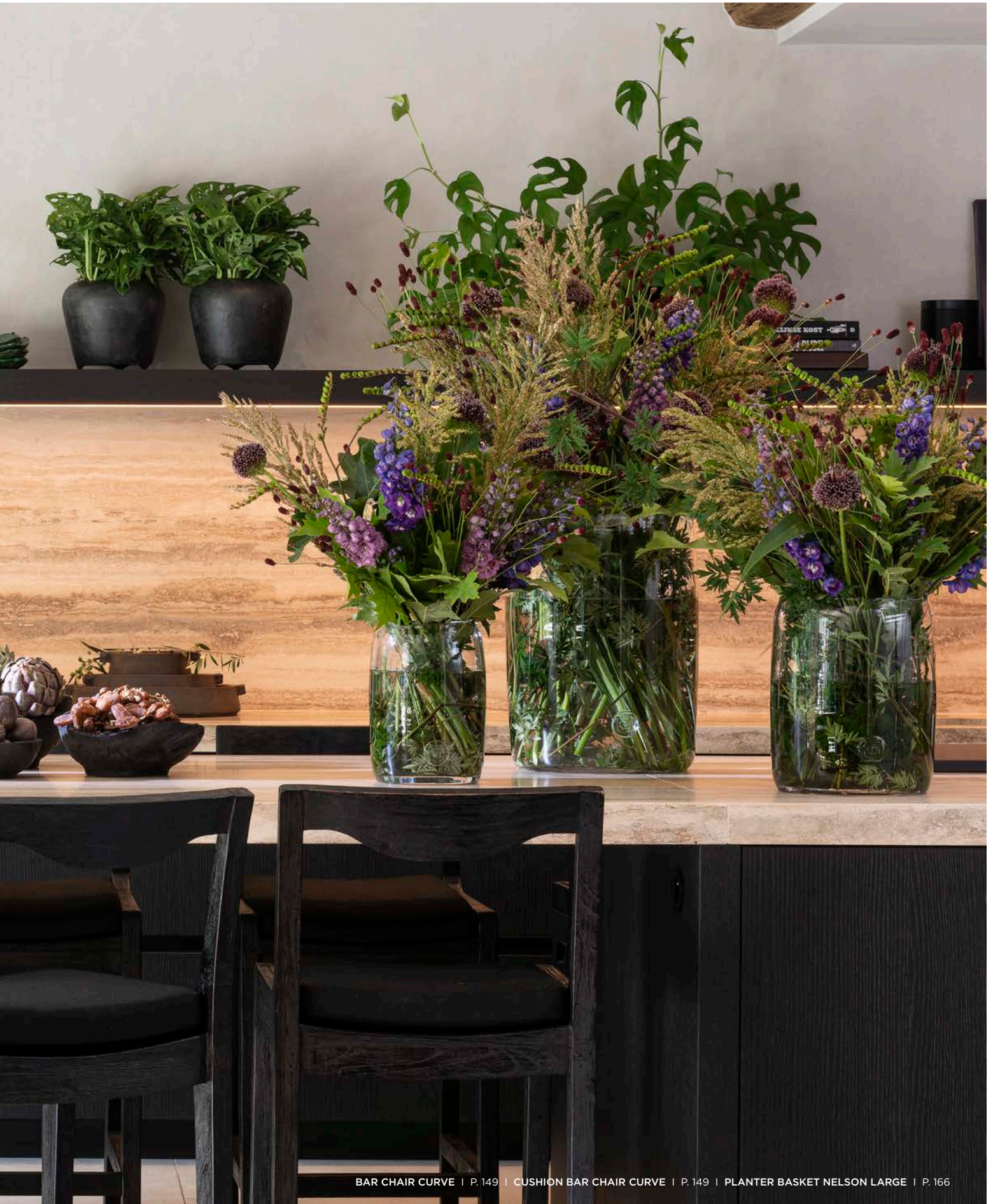
TABLE VINCE | P. 155 | ARMCHAIR SALLY UPHOLSTERED | P. 147











BAR CHAIR CURVE | P. 149 | CUSHION BAR CHAIR CURVE | P. 149 | PLANTER BASKET NELSON LARGE | P. 166



BAR CHAIR ALBA | P. 149 | BAR TABLE ALEXI SMALL | P. 156



ROUND BAR TABLE ANTON | P. 155 | COUNTER CHAIR ALBA | P. 149  
CUSHION COUNTER CHAIR ALBA | P. 149 | CABINET VINCENT | P. 150



Our bar tables and chairs redefine the art of gathering and socialising with their refined designs. Their elevated surfaces offer the perfect backdrop for wonderful moments filled with conversation and laughter.



## ACCESSORIES

Decoration is an important part of interior design and our indoor accessories offer a wealth of possibilities. Baskets, consoles, shelves, stools, deco cushions and rugs all contribute to creating a warm environment in which you can completely unwind.

A recent addition to our collection is our new selection of indoor rugs. Constructed out of jute or wool of superior quality in a multitude of stunning, neutral colours, they will add a final touch of warmth to your living room. Each rug is specially designed to match our other indoor items and will provide a natural finish to your settings.

Wood, teak root, wicker and rattan will add stunning textures and an organic feel. Our fabrics will provide a contrasting softness and luxury. All of these materials combined will tie the room together into a space that can be enjoyed to the fullest.

Let the decorative settings on the following pages visually indulge and inspire you. All technical specifications, fabric customisation options and maintenance advice can be found at the end of the catalogue.





THE ACTUAL COLOURS MAY VARY FROM IMAGES SHOWN,  
DIMENSIONS ARE INDICATIVE AND MAY DIFFER FROM REALITY.



CONSOLE DRAKE | P. 164



RECTANGULAR CONSOLE ZORBA | P. 165



CONSOLE ROOT | P. 164



CONSOLE RUBY | P. 165



Teak wood consoles, benches, stools and coffee tables with their sleek lines and organic appeal can form focal points of both elegance and utility. The versatile pieces blend form and function, making them ideal companions for both contemporary and traditional interior settings.



STOOL PEBBLE | P. 148 | SIDE TABLE PEBBLE MEDIUM & LARGE | P. 160 - 161



CLUB JULES WITH SWIVEL UPHOLSTERED | P. 143 | COFFEE TABLE DAY MEDIUM | P. 161 | CONSOLE CHRISTO | P. 165







Overall, accessories have the power to not only enhance living spaces, but also enrich the soul with their timeless allure, as the beauty of nature and the mastery of design come together into an exquisite result.





ROUND SIDE TABLE PHIL SMALL - MEDIUM - LARGE | P. 162





DOG BED MAX INCL. CUSHION | P. 166



COAT RACK | P. 167



STOOL ALEXANDER | P. 148

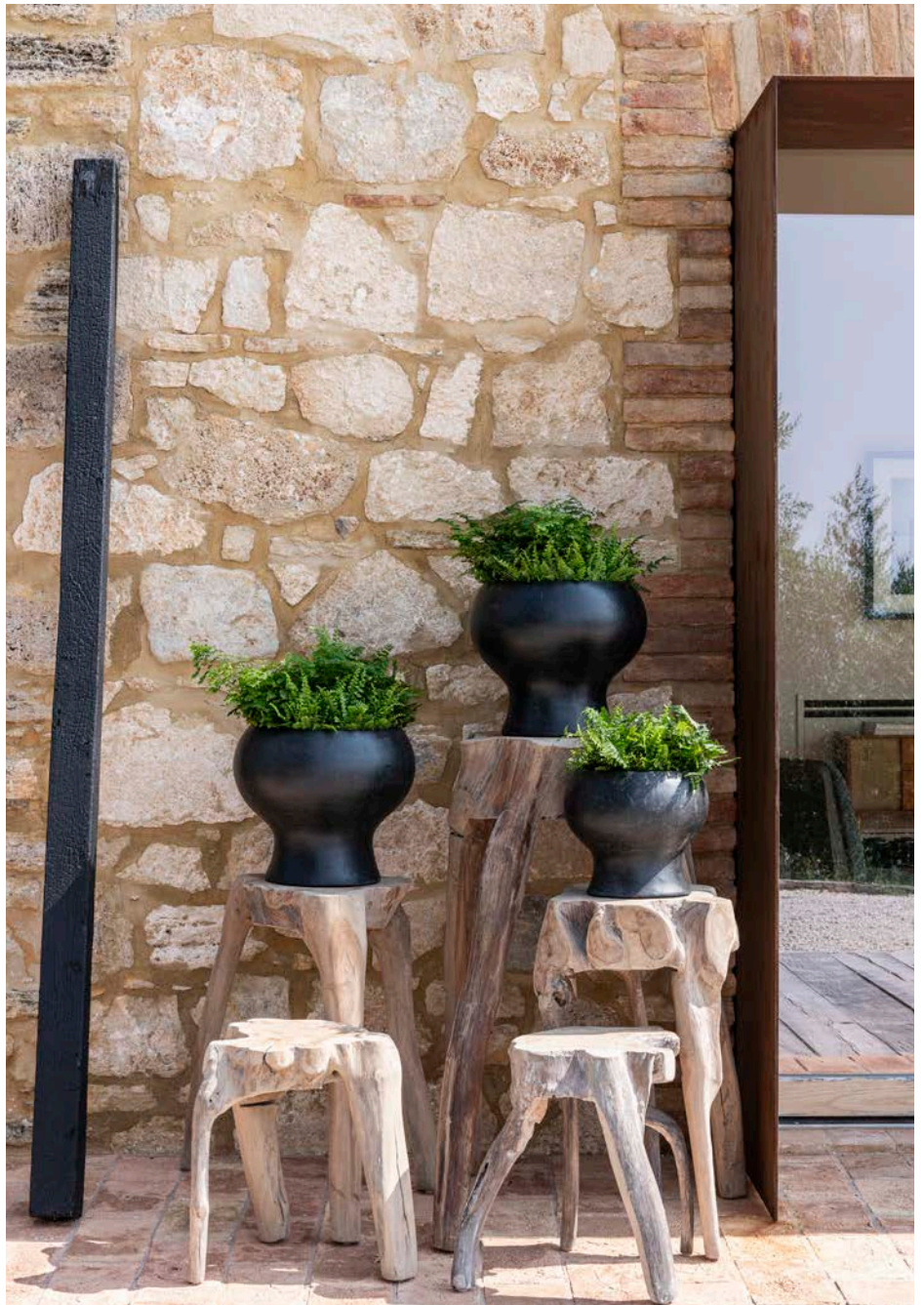




STOOL ALEX | P. 148



SIDE TABLE DOBLO SMALL - MEDIUM - LARGE | P.162



SIDE TABLE CUMI SMALL - MEDIUM - LARGE | P. 163





Rattan planters and baskets bring the essence of the outdoors inside, imbuing a space with a touch of organic allure. The handwoven creations celebrate the earthy charm of the material while providing functional and stylish storage and decoration solutions.



SIDE CHAIR CAROL | P. 141 | CUSHION SEAT SIDE CHAIR CAROL | P. 141  
PLANTER BASKET NELSON SMALL | P. 166 | DECO CUSHIONS | P. 169



PLANTER BASKET NELSON LARGE | P. 166 | BAR CHAIR CURVE | P. 149 | CUSHION BAR CHAIR CURVE | P. 149

\*FABRIC AVAILABLE IN DIFFERENT CATEGORIES  
SELECTION ON PAGES 128 - 133









Deco cushions, throws and rugs can infuse a room with soft comfort and a sense of luxury, while also adding a beautiful burst of colour and pattern. With the variety of high-quality fabrics we carefully select, all will effortlessly complement any decor.

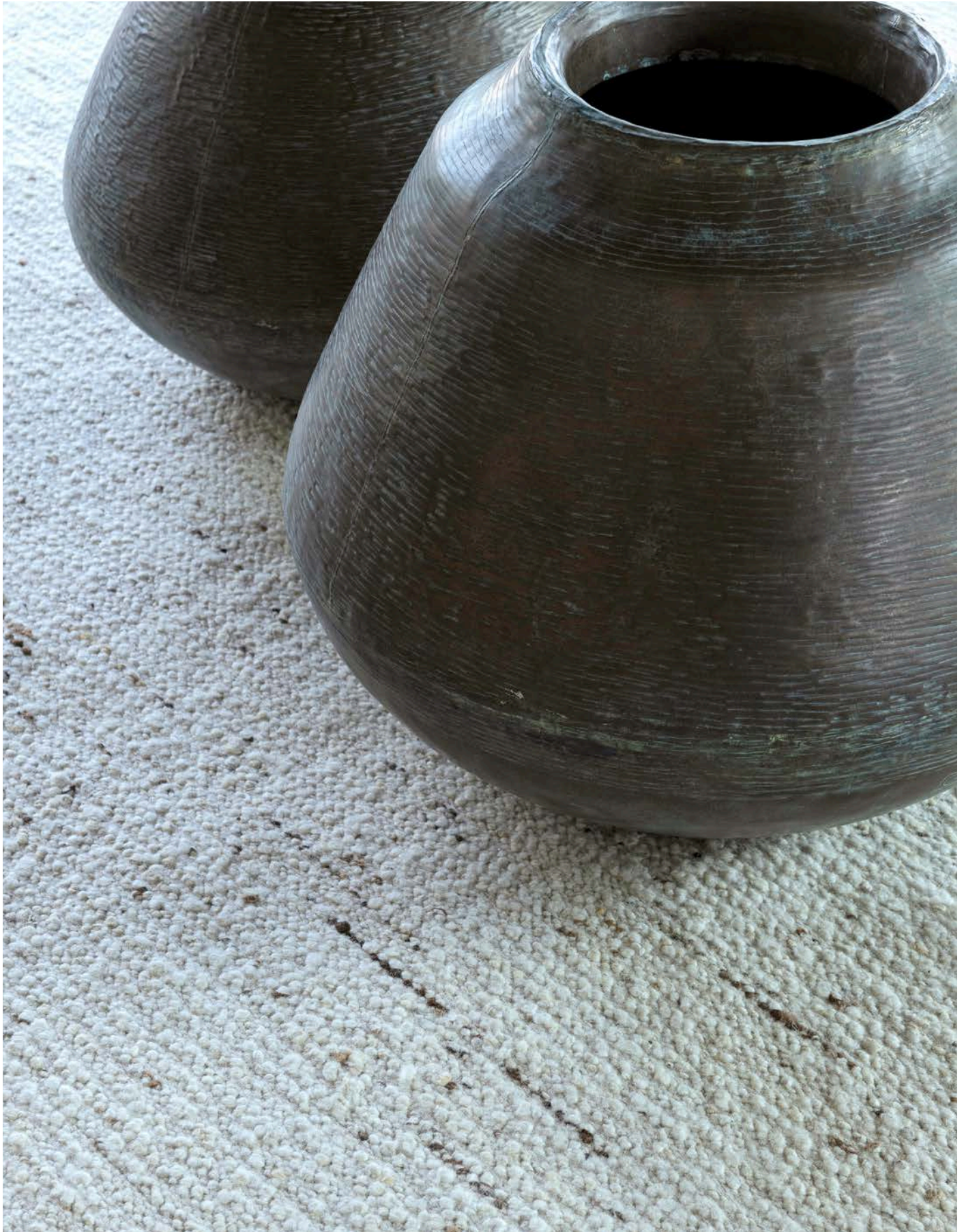




RECTANGULAR RUG NOMAD AMBER & DARK BROWN | P. 170  
RECTANGULAR RUG NIMROD BEIGE | P. 170



ROUND RUG NOMAD AMBER & DARK BROWN | P. 171  
ROUND RUG NIMROD BEIGE | P. 171



RECTANGULAR RUG NIMROD BEIGE | P. 170



RECTANGULAR RUG CASTOR PETROL GREEN & NATURAL | P. 170 - 171

## FABRIC SELECTION

All GOMMAIRE fabrics are designed and made in Europe with the highest quality in mind. Only the best yarn with a natural, luxurious feel is used and expertly woven into unique patterns that fit our designs perfectly.

Moreover, we update our fabric selection regularly, adding new and fresh colours and patterns to complement our furniture in the best possible manner. Especially regarding our indoor collection of upholstery and deco cushions.

For an optimal lifespan, our fabrics are strengthened with a FibreGuard treatment, resulting in a long lasting look and feel and ensuring low maintenance requirements. This makes them especially suitable for hospitality purposes.

A wide range of indoor fabrics is available in various price categories. Please consult the following pages for our current fabric range. The technical specifications in the next section reveal which fabric categories are applicable to which designs.

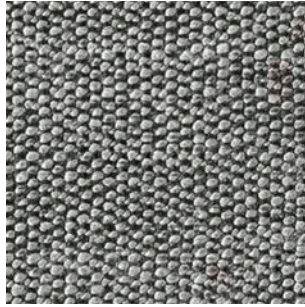




INDOOR - FABRIC SELECTION



CAT-A  
LAMADRID SNOOKER  
COL. 10



CAT-B  
LAMADRID MADEIRA  
COL. 803



CAT-B  
LAMADRID MADEIRA  
COL. 903



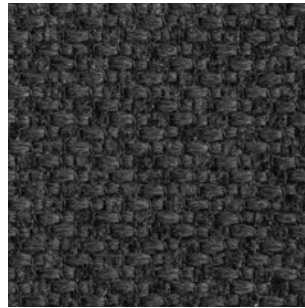
CAT-B  
LAMADRID MADEIRA  
COL. 904



CAT-B  
LAMADRID BOLT  
COL. 15 (FIBREGUARD)



CAT-B  
LAMADRID SOUL  
COL. 16 (FIBREGUARD)



CAT-B  
LAMADRID WICKER  
COL. 01 (FIBREGUARD)



CAT-C  
LAMADRID LANCE  
COL. 269



CAT-C  
LAMADRID LANCE  
COL. 300



CAT-C  
PUYLAERT MADISON  
12038



CAT-C  
PUYLAERT MADISON  
12061



CAT-C  
PUYLAERT MADISON  
12080



CAT-C  
PUYLAERT MADISON  
12081



CAT-C  
KNELIN 02



CAT-C  
KNELIN 03



CAT-C  
KNELIN 04



CAT-C  
LAMADRID MIKADO  
COL. 11 (FIBREGUARD)



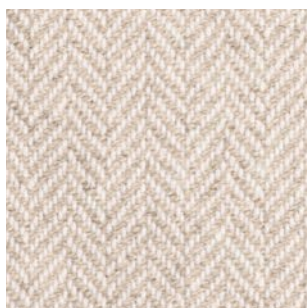
CAT-C  
LAMADRID MIKADO  
COL. 17 (FIBREGUARD)



CAT-C  
LAMADRID CAVALRY  
COL. 12 (FIBREGUARD)



CAT-C  
LAMADRID CAVALRY  
COL. 33 (FIBREGUARD)



CAT-D  
LES CREATIONS VINYET  
COL. 00



CAT-D  
LES CREATIONS SITGES  
COL. 03



CAT-E  
LES CREATIONS  
SHAUN (BOUCLE) COL. 1



CAT-E  
LAMADRID BLACKJACK  
COL. 6



CAT-E  
LAMADRID BLACKJACK  
COL. 11



CAT-E  
LES CREATIONS BRUGGE  
COL. 5



CAT-E  
LES CREATIONS BRUGGE  
COL. 11



CAT-E  
LES CREATIONS BRUGGE  
COL. 16



CAT-E  
LES CREATIONS BRUGGE  
COL. 18



CAT-E  
PUYLAERT MASKA  
YP 15001



CAT-E  
PUYLAERT MASKA  
YP 15002



CAT-E  
PUYLAERT MASKA  
YP 15006

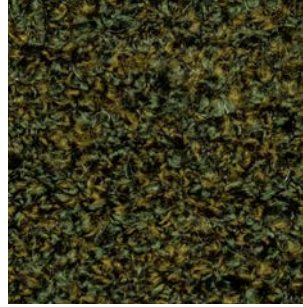
INDOOR - FABRIC SELECTION



CAT-E  
PUYLAERT MASKA  
YP 15014



CAT-E  
PUYLAERT MASKA  
YP 15015



CAT-F  
CASAL CURLY  
COL. 35



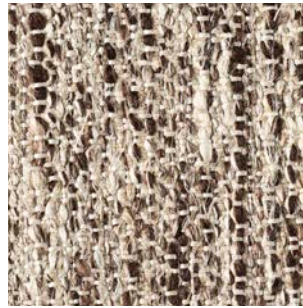
CAT-F  
CASAL CURLY  
COL. 52



CAT-F  
CASAL CURLY  
COL. 76



CAT-F  
CASAL CURLY  
COL. 77



CAT-F  
PUYLAERT DAKU  
YP 19008



CAT-F  
PUYLAERT DAKU  
YP 19010



CAT-F  
PUYLAERT DAKU  
YP 19012



CAT-F  
PUYLAERT GOWAN  
YP 17001



CAT-F  
PUYLAERT GOWAN  
YP 17005



CAT-F  
PUYLAERT GOWAN  
YP 17009



CAT-F  
PUYLAERT MANIACU  
YP 18002



CAT-G  
PUYLAERT KUNA  
20002



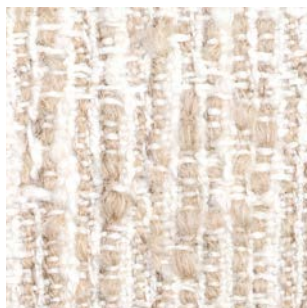
CAT-G  
PUYLAERT KUNA  
20003



CAT-G  
PUYLAERT BENGARA  
YP 21003



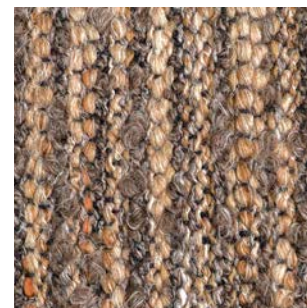
CAT-G  
PUYLAERT CAMPO  
YP 22004



CAT-G  
PUYLAERT CHUNGA  
YP 20001



CAT-G  
PUYLAERT RAMOS  
YP 22003



CAT-G  
PUYLAERT RAMOS  
YP 22004



CAT-G  
PUYLAERT RAMOS  
YP 22007



CAT-G  
PUYLAERT ROBLES  
YP 22004



CAT-G  
PUYLAERT ROBLES  
YP 22015



CAT-G  
PUYLAERT ROBLES  
YP 22016



CAT-G  
PUYLAERT ROBLES  
YP 22017





## **TECHNICAL SPECIFICATIONS**

On the following pages, you will find the complete indoor collection, including all technical details.

You can use the specifications to see whether your selected item has the right dimensions to fit within the desired space. The length, width and height are specified.

Moreover, it will tell you out of which material or materials the item is made.

Lastly, you can use the designated codes and fabric overview in the previous section to see what options you have in terms of upholstery or cushion covers.

Should you have any additional questions, please do not hesitate to contact your local GOMMAIRE retailer or our service department.



**SOFA ANTHONY 3-SEATER**

G452-CAT A / B / C / D / E / F / G (P. 15, 18)

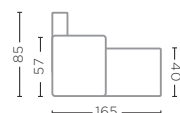
W240 X D95 X H85 CM



**CHAISE LONGUE ANTHONY LEFT ARM**

G452-CHL-LEFT-CAT A / B / C / D / E / F / G

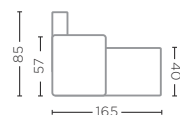
W85 X D165 X H85 CM



**CHAISE LONGUE ANTHONY RIGHT ARM**

G452-CHL-RIGHT-CAT A / B / C / D / E / F / G (P. 20)

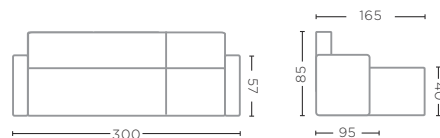
W85 X D165 X H85 CM



**SOFA ANTHONY LEFT CHAISE LONGUE**

G452-LEFT-CAT A / B / C / D / E / F / G

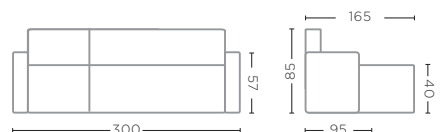
W300 X D95 X H85 CM



**SOFA ANTHONY RIGHT CHAISE LONGUE**

G452-RIGHT-CAT A / B / C / D / E / F / G

W300 X D95 X H85 CM



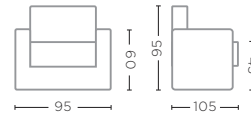




**SOFA BERNARD 1-SEATER**  
G002-CAT A / B / C / D / E / F / G

W95 X D105 X H95 CM

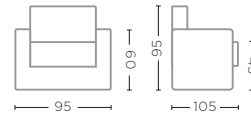
Deco cushions are included.



**SOFA BERNARD 1-SEATER WITH COVER**  
G002-COVER-CAT A / B / C / D / E / F / G (P. 21)

W95 X D105 X H95 CM

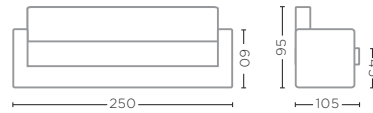
Deco cushions are included.



**SOFA BERNARD 3-SEATER**  
G001-CAT A / B / C / D / E / F / G (P. 172)

W250 X D105 X H95 CM

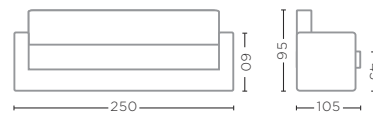
Deco cushions are included.



**SOFA BERNARD 3-SEATER WITH COVER**  
G001-COVER-CAT A / B / C / D / E / F / G

W250 X D105 X H95 CM

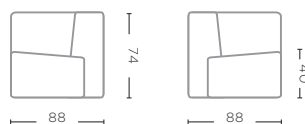
Deco cushions are included.





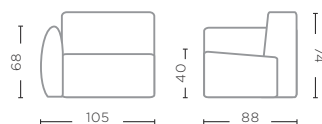
**MODULAR SOFA FERRE REAL CORNER**  
G511-CAT A / B / C / D / E / F / G (P. 22-23, 24-25)

W88 X D88 X H74 CM



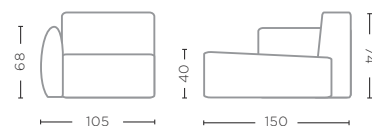
**MODULAR SOFA FERRE RIGHT CORNER**  
G513-CAT A / B / C / D / E / F / G (P. 22-23, 24-25)

W105 X D88 X H74 CM



**MODULAR SOFA FERRE RIGHT CHAISE LONGUE**  
G513-CHL-CAT A / B / C / D / E / F / G

W105 X D150 X H74 CM



**MODULAR SOFA FERRE OTTOMAN SMALL**  
G515-CAT A / B / C / D / E / F / G (P. 24-25, 38-39)

W50 X D88 X H40 CM

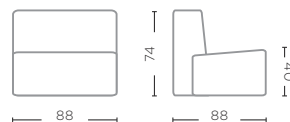




**MODULAR SOFA FERRE CENTER**

G514-CAT A / B / C / D / E / F / G (P. 22-23, 24-25)

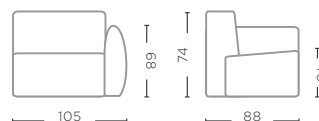
W88 X D88 X H74 CM



**MODULAR SOFA FERRE LEFT CORNER**

G512-CAT A / B / C / D / E / F / G

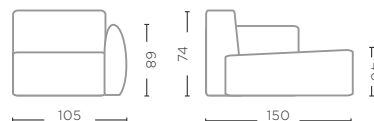
W105 X D88 X H74 CM



**MODULAR SOFA FERRE LEFT CHAISE LONGUE**

G512-CHL-CAT A / B / C / D / E / F / G (P. 22-23, 24-25)

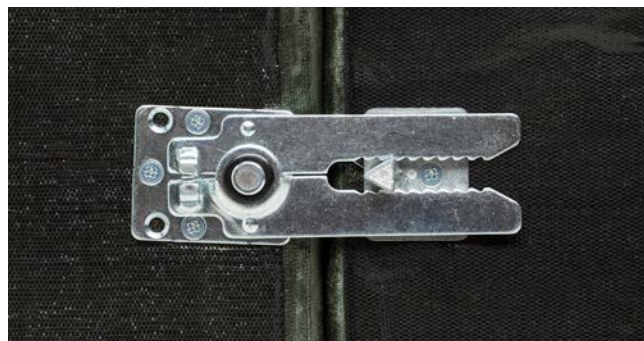
W105 X D150 X H74 CM



**MODULAR SOFA FERRE OTTOMAN LARGE**

G516-CAT A / B / C / D / E / F / G (P. 22-23, 24-25)

W80 X D88 X H40 CM

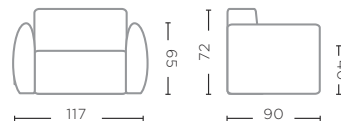




**SOFA FERRE 1-SEATER**

G575-CAT A / B / C / D / E / F / G (P. 30-31, 39)

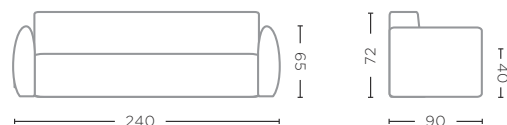
W117 X D90 X H72 CM



**SOFA FERRE 3-SEATER**

G574-CAT A / B / C / D / E / F / G (P. 16-17, 26-27)

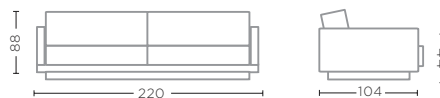
W240 X D90 X H72 CM



**SOFA NEIL 3-SEATER**

G614-CAT A / B / C / D / E / F / G (P. 44-45, 58, 122)

W220 X D104 X H88 CM



**OTTOMAN NEIL**

G614-P-CAT A / B / C / D / E / F / G (P. X)

W80 X D80 X H33 CM



**SOFA DEAN**

G607-CAT A / B / C / D / E / F / G (P. 11, 42-43)

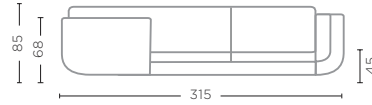
W250 X D95 X H85 CM



**MODULAR SOFA SET DEAN**

G609-SET-CAT A / B / C / D / E / F / G (P. 38-39, 40-41)

W315 X D315 X H85 CM



**WABI SOFA**

G650-ANT (P. 32-33)

W240 X D125 X H75 CM

RECLAIMED TEAK ANTHRACITE

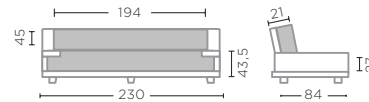


**CUSHION SET WABI SOFA**

G650-CAT A / B / C / D / E / F / G (P. 32-33)

W194 X D21 X H45 CM

W230 X D84 X H27 CM

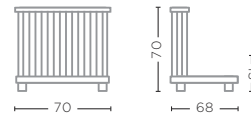


**SIDE CHAIR CAROL**

G406-FUM (P. 35, 118)

W70 X D68 X H70 CM

RECLAIMED TEAK FUME



**CUSHION SEAT SIDE CHAIR CAROL**

G406-CAT A / B / C / D / E / F / G (P. 35, 118)

W70 X D65 X H30 CM

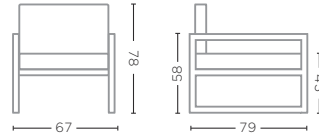




**EASY CHAIR SALLY UPHOLSTERED**

G352E-ANT-CAT A / B / C / D / E / F / G (P. 34)

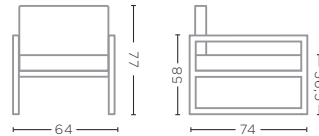
TEAK FRAME ANTHRACITE  
W67 X D79 X H78 CM



**EASY CHAIR SALLY OPEN WEAVE**

G352E-ABR-RA (P. 26, 28-29)

TEAK AUTHENTIC BROWN & CL RATTAN  
W64 X D74 X H77 CM



**CUSHION EASY CHAIR SALLY OPEN WEAVE**

G352E-CAT A / B / C / D / E / F / G (P. 26, 28-29)

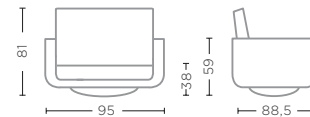
W60 X D68 X H5 CM



**CLUB MASON BEIGE WITH SWIVEL**

G640-GOM001 BEIGE (P. 49)

W95 X D88,5 X H81 CM



**CLUB MASON BROWN WITH SWIVEL**

G640-GOM004 BROWN

W95 X D88,5 X H81 CM

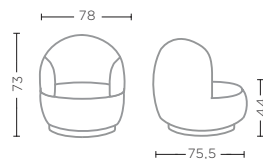




**CLUB NATHAN SAND WITH SWIVEL**

G641-GOM003 (P. 134)

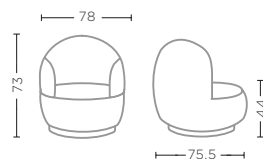
GOM003 SAND  
W78 X D75,5 X H73 CM



**CLUB NATHAN GREEN WITH SWIVEL**

G641-GOM005 (P. 32-33, 46)

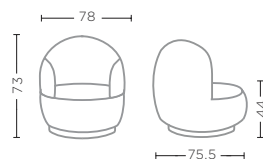
GOM005 GREEN  
W78 X D75,5 X H73 CM



**CLUB NATHAN TERRACOTTA WITH SWIVEL**

G641-GOM006 (P. 36)

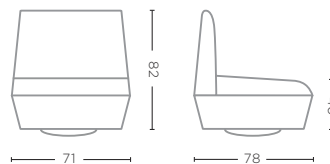
GOM006 TERRACOTTA  
W78 X D75,5 X H73 CM



**CLUB JULES WITH SWIVEL**

G708-ABR-CAT A / B / C / D / E / F / G  
(P. 12-13, 104, 106, 178)

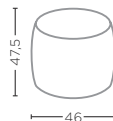
TEAK AUTHENTIC BROWN FRAME  
W71 X D78 X H82 CM





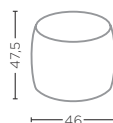
**POUFFE NATHAN SMALL SAND**  
G642-GOM003 (P. 47, 134)

GOM003 SAND  
Ø46 X H47,5 CM



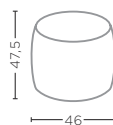
**POUFFE NATHAN SMALL GREEN**  
G642-GOM005 (P. 15, 18, 47)

GOM005 GREEN  
Ø46 X H47,5 CM



**POUFFE NATHAN SMALL TERRACOTTA**  
G642-GOM006

GOM006 TERRACOTTA  
Ø46 X H47,5 CM

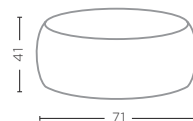






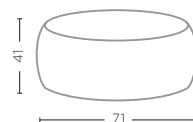
**POUFFE NATHAN LARGE SAND**  
G643-GOM003

GOM003 SAND  
Ø71 X H41 CM



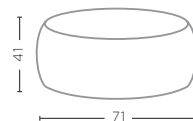
**POUFFE NATHAN LARGE GREEN**  
G643-GOM005 (P. 15, 46-47)

GOM005 GREEN  
Ø71 X H41 CM



**POUFFE NATHAN LARGE TERRACOTTA**  
G643-GOM006 (P. 47)

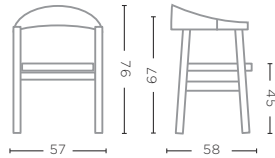
GOM006 TERRACOTTA  
Ø71 X H41 CM





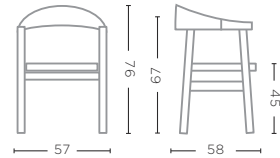
**ARMCHAIR FAYE  
UPHOLSTERED**  
G353-OLPA-CAT A / B / C / D /  
E / F / G (P. 66-67)

RECLAIMED WOOD ORIGINAL  
AGED PATINE FRAME  
W57 X D58 X H76 CM



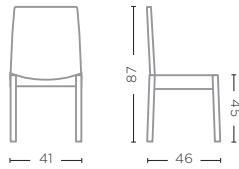
**ARMCHAIR FAYE  
UPHOLSTERED**  
G353-FUM-CAT A / B / C / D /  
E / F / G (P. 68-69, 82-83, 88)

TEAK FRAME FUME  
W57 X D58 X H76 CM



**CHAIR ALBA**  
G371-AUT (P. 65, 80-81)

RECLAIMED TEAK  
AUTHENTIC GREY  
W41 X D46 X H87 CM



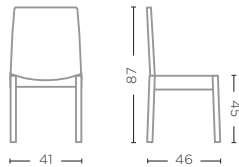
**CUSHION CHAIR ALBA**  
G371-BASIC / CAT A / B / C / D /  
E / F / G (P. 80)

W41 X D43 X H3 CM



**CHAIR ALBA**  
G371-FUM

RECLAIMED TEAK FUME  
W41 X D46 X H87 CM



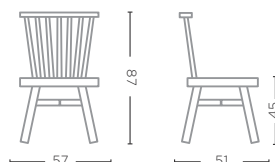
**CUSHION CHAIR ALBA**  
G371-BASIC / CAT A / B / C / D /  
E / F / G

W41 X D43 X H3 CM



**CHAIR CAROL**  
G600-ANT (P. 74-75)

TEAK ANTHRACITE  
W57 X D51 X H87 CM



**CUSHION CHAIR CAROL**  
G600-CAT A / B / C / D / E / F / G

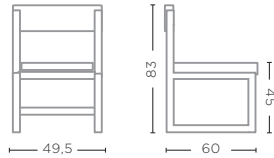
W42 X D47 X H4 CM



**CHAIR SALLY UPHOLSTERED**

G352-FUM-CAT A / B / C / D / E / F / G (P. 84-85)

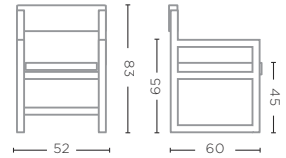
TEAK FRAME FUME  
W49,5 X D60 X H83 CM



**ARMCHAIR SALLY UPHOLSTERED**

G352A-FUM-CAT A / B / C / D / E / F / G (P. 86-87, 116)

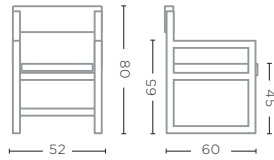
TEAK FRAME FUME  
W52 X D60 X H83 CM



**ARMCHAIR SALLY OPEN WEAVE**

G352A-AUT-RA (P. 7, 72-73)

TEAK AUTHENTIC GREY & CL RATTAN  
W52 X D60 X H80 CM



**CUSHION ARMCHAIR SALLY OPEN WEAVE**

G352A-CAT A / B / C / D / E / F / G (P. X)

W46 X D49 X H3 CM

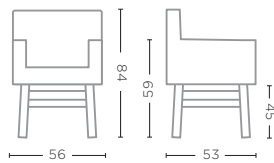


**ARMCHAIR JACKY**

G111-SR (P. 76-77)

TEAK FRAME NATURAL GREY & SRIMIT GREY  
W56 X D53 X H84 CM

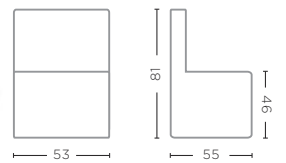
Cushion available on request.



**CHAIR JERRY ON WHEELS UPHOLSTERED**

G003-CAT A / B / C / D / E / F / G (P. 78-79)

W53 X D55 X H81 CM



SOFAS, CHAIRS AND STOOLS - TECHNICAL SPECIFICATIONS



**STOOL YANNE**  
G553-ANT  
TEAK ANTHRACITE  
Ø38 X H45 CM



**STOOL YANNICK**  
G554-ANT (P. 21)  
TEAK ANTHRACITE  
Ø38 X H45 CM



**STOOL PEBBLE**  
G662-ANT (P. 103)  
TEAK ANTHRACITE  
W45 X D30 X H45 CM



**BENCH PEBBLE**  
G662-BENCH-ANT (P. 102)  
TEAK ANTHRACITE  
W120 X D30 X H45 CM



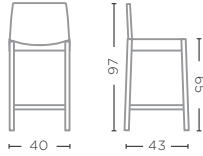
**STOOL ALEX**  
G083-FUM (P. 113)  
RECLAIMED TEAK FUME  
Ø30 X H45 CM



**STOOL ALEXANDER**  
G061-NAT (P. 112)  
TEAK ROOT NATURAL GREY  
Ø40 X H45 CM



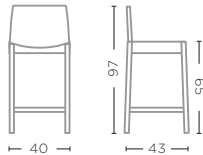
**BAR CHAIR ALBA**  
G371B-FUM (P. 92)  
RECLAIMED TEAK FUME  
W40 X D43 C H97 CM



**CUSHION BAR CHAIR ALBA**  
G371B-BASIC / CAT A / B / C / D  
/ E / F / G  
W40 X D38 X H3 CM



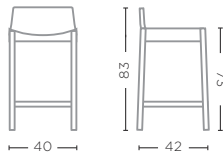
**BAR CHAIR ALBA**  
G371B-AUT  
RECLAIMED TEAK  
AUTHENTIC GREY  
W40 X D43 C H97 CM



**BARSTOOL ALEX**  
G671-ANT (P. 94-95)  
TEAK ANTHRACITE  
Ø34 X H65 CM



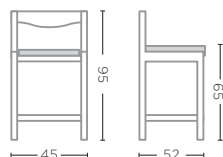
**COUNTER CHAIR ALBA**  
G371C-FUM (P. 93)  
RECLAIMED TEAK FUME  
W40 X D42 X H83 CM



**CUSHION COUNTER CHAIR ALBA**  
G371C-BASIC / CAT A / B / C / D  
/ E / F / G (P. 93)  
W40 X D38 X H3 CM



**BAR CHAIR CURVE**  
G057B-FUM (P. 90-91)  
TEAK FUME  
W45 X D52 X H95 CM



**CUSHION BAR CHAIR CURVE**  
G057B-BASIC / CAT A / B / C /  
D / E / F / G (P. 90-91)  
W39 X D46 X H5 CM

CABINETS - TECHNICAL SPECIFICATIONS



**CABINET AMBROSE**

G573-DAB (P. 82)

RECLAIMED WOOD ORIGINAL AGED PATINE  
W110 X D48 X H220 CM



**CABINET SAAR SMALL**

G340S-AUT

RECLAIMED TEAK AUTHENTIC GREY  
W120 X D45 X H220 CM



**CABINET VINCENT**

G498-ANT (P. 93)

RECLAIMED TEAK ANTHRACITE  
W120 X D48 X H220 CM



**CABINET VINCENT**

G498-OAK (P. 54, 70-71)

SOLID FRENCH OAK  
W120 X D48 X H220 CM



**DRESSOIR TRACY**  
G580-DAB (P. 50-51)

RECLAIMED WOOD ORIGINAL AGED PATINE  
W240 X D50 X H100 CM



**CABINET SAAR LARGE**  
G340L-AUT (P. 58-59)

RECLAIMED TEAK AUTHENTIC GREY  
W250 X D45 X H220 CM



**DISPLAY DIZZY**  
G345-FUM (P. 61)

RECLAIMED TEAK FUME  
W170 X D45 X H234 CM



**DRESSOIR VINCENT**  
G451-OAK (P. 55)

SOLID FRENCH OAK  
W290 X D48 X H85 CM

CABINETS - TECHNICAL SPECIFICATIONS



**TV CABINET TELLY**

G581-DAB (P. 53)

RECLAIMED WOOD ORIGINAL AGED PATINE  
W198 X D50 X H50 CM



**DRESSOIR ABEL**

G645-OLPA (P. 52)

RECLAIMED WOOD ORIGINAL AGED PATINE  
W190 X D50 X H95 CM



**DRESSOIR CUBIC**

G649-ANT (P. 56-57)

RECLAIMED TEAK ANTHRACITE  
W220 X D50 X H115 CM



**CABINET SYLVIE**

G020-FUM

RECLAIMED TEAK FUME  
W170 X D45 X H260 CM





**CABINET ABEL**  
G643-DAB

RECLAIMED WOOD ORIGINAL AGED PATINE  
W100 X D50 X H220 CM



**CABINET ABEL 2 DOORS**  
G644-DAB

RECLAIMED WOOD ORIGINAL AGED PATINE  
W100 X D50 X H220 CM



**CABINET CUBIC**  
G648-ANT (P. 78-79)

RECLAIMED TEAK ANTHRACITE  
W130 X D50 X H220 CM



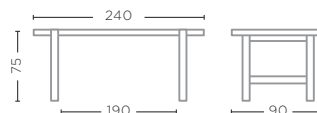
**RACK JEAN**  
G494-FUM (P. 60)

RECLAIMED TEAK FUME  
W130 X D45 X H220 CM



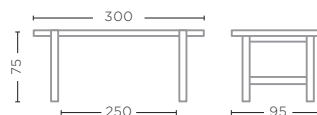
**TABLE JACOB SMALL**  
G023S-AUT

RECLAIMED TEAK AUTHENTIC GREY  
L240 X W90 X H75 CM



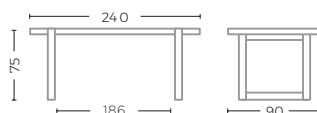
**TABLE JACOB LARGE**  
G023L-AUT

RECLAIMED TEAK AUTHENTIC GREY  
L300 X W95 X H75 CM



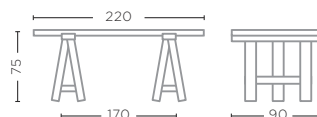
**TABLE JUSTIN LARGE**  
G588-AUT (P. 65, 81)

RECLAIMED TEAK AUTHENTIC GREY  
L240 X W90 X H75 CM



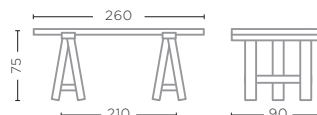
**TABLE SHRAGI SMALL**  
G027S-AUT-FUM

RECLAIMED TEAK AUTHENTIC GREY & FUME  
L220 X W90 X H75 CM



**TABLE SHRAGI LARGE**  
G027L-AUT-FUM

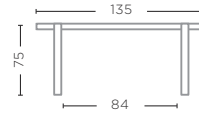
RECLAIMED TEAK AUTHENTIC GREY & FUME  
L260 X W90 X H75 CM





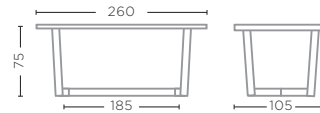
**ROUND TABLE FLOOR**  
G490-FUM (P. 68-69)

RECLAIMED TEAK FUME  
Ø135 X H75 CM



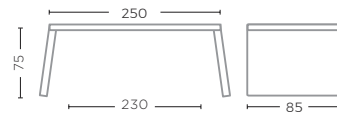
**OVAL TABLE DAN**  
G026-FUM (P. 85)

RECLAIMED TEAK FUME  
L260 X W105 X H75 CM



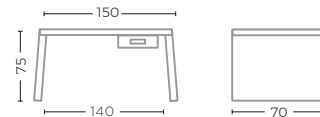
**TABLE VINCE**  
G586-ANT (P. 86-87)

RECLAIMED TEAK ANTHRACITE  
L250 X W85 X H75 CM



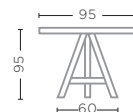
**DESK VINCE**  
G587-ANT (P. 88-89)

RECLAIMED TEAK ANTHRACITE  
L150 X W70 X H75 CM



**ROUND BAR TABLE ANTON**  
G193-BAR-FUM (P. 93)

RECLAIMED TEAK FUME  
Ø95 X H95 CM

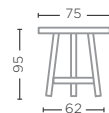




**ROUND BAR TABLE ALEX**

G670-ANT (P. 94-95)

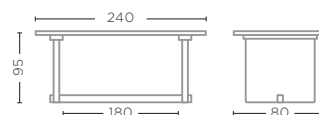
TEAK ANTHRACITE  
Ø75 X H95 CM



**BAR TABLE ALEXI SMALL**

G341S-BAR-FUM (P. 92)

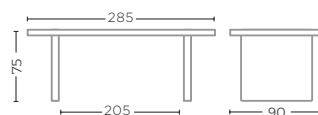
RECLAIMED TEAK FUME  
L240 X W80 X H95 CM



**DRAKE DINING TABLE**

G655-AUT (P. 78-79)

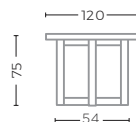
RECLAIMED TEAK AUTHENTIC GREY  
L285 X D90 X H75 CM



**JUSTIN TABLE DIA 120**

G654S-AUT

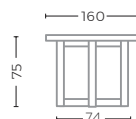
RECLAIMED TEAK AUTHENTIC GREY  
Ø120 X H75 CM



**JUSTIN TABLE DIA 160**

G654L-AUT (P. 7, 73)

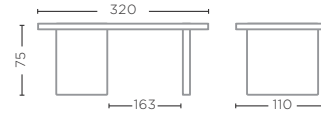
RECLAIMED TEAK AUTHENTIC GREY  
Ø160 X H75 CM



**TABLE SYLVIA**

G497-OAK (P. 70-71)

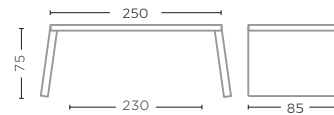
MASSIVE FRENCH OAK  
L320 X W110 X H75 CM



**TABLE VINCE**

G586-OAK

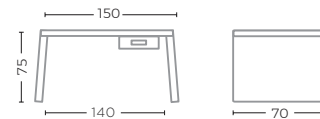
SOLID FRENCH OAK  
L250 X W85 X H75 CM



**DESK VINCE**

G587-OAK

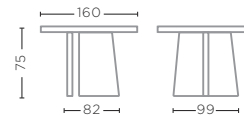
SOLID FRENCH OAK  
L150 X W70 X H75 CM



**ROUND TABLE VINCENT**

G449-OAK

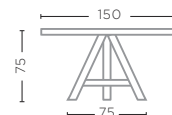
SOLID FRENCH OAK  
Ø160 X H75 CM



**ROUND TABLE ANTOINETTE**

G029-OAK (P. 66)

SOLID FRENCH OAK  
Ø150 X H75 CM

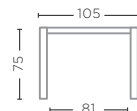




**SQUARE TABLE ARCHIE**

G583-DAB (P. 76-77)

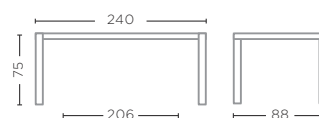
RECLAIMED WOOD ORIGINAL AGED PATINE  
L105 X W105 X H75 CM



**TABLE ARCHIE SMALL**

G570S-DAB

RECLAIMED WOOD ORIGINAL AGED PATINE  
L240 X W88 X H75 CM



**TABLE ARCHIE LARGE**

G570L-DAB (P. 67, 82)

RECLAIMED WOOD ORIGINAL AGED PATINE  
L300 X W95 X H75 CM



**SQUARE COFFEE TABLE ARCHIE**

G584-DAB (P. 30-31, 40)

RECLAIMED WOOD ORIGINAL AGED PATINE  
L75 X W75 X H32 CM



**COFFEE TABLE ARCHIE LARGE**

G572L-DAB (P. 45)

RECLAIMED WOOD ORIGINAL AGED PATINE  
L175 X W75 X H32 CM

TABLES, COFFEE TABLES AND CONSOLES - TECHNICAL SPECIFICATIONS



**COFFEE TABLE MAY**  
G325-NAT (P. 3)

RECLAIMED TEAK NATURAL GREY  
L130 X W40 X H35 CM

**COFFEE TABLE MAY**  
G325-FUM

RECLAIMED TEAK FUME  
L130 X W40 X H35 CM



**COFFEE TABLE BRUCE**  
G582-DAB (P. 18-19)

RECLAIMED WOOD ORIGINAL AGED PATINE &  
TOP TRAVERTIN STONE  
L140 X W50 X H35 CM



**RECTANGULAR COFFEE TABLE DRAKE SMALL**  
G322S-RECT-AUT (P. 11, 42)

RECLAIMED TEAK AUTHENTIC GREY  
L155 X W65 X H38 CM



**RECTANGULAR COFFEE TABLE DRAKE LARGE**  
G322L-RECT-AUT

RECLAIMED TEAK AUTHENTIC GREY  
L190 X W75 X H38 CM



**SQUARE COFFEE TABLE DRAKE**  
G322-AUT

RECLAIMED TEAK AUTHENTIC GREY  
L110 X W110 X H38 CM



**COFFEE TABLE NATURAL SHAPE**  
G165-NAT

TEAK ROOT NATURAL GREY  
L85-100 X W35-45 X H40 CM



**COFFEE TABLE NATURAL SHAPE**  
G165-FUM (P. 176)

TEAK ROOT FUME  
L85-100 X W35-45 X H40 CM



**SQUARE COFFEE TABLE CUBIC**  
G563-ANT (P. 16-17)

RECLAIMED TEAK ANTHRACITE  
L50 X W50 X H35 CM



**RECTANGULAR COFFEE TABLE CUBIC**  
G563-RECT-ANT (P. 16-17)

RECLAIMED TEAK ANTHRACITE  
L110 X W50 X H35 CM



**SIDE TABLE PEBBLE MEDIUM**  
G663M-ANT (P. 103)

TEAK ANTHRACITE  
L52 X W38 X H40 CM





**WABI COFFEE TABLE SMALL**  
G652-ANT (P. 32-33)

RECLAIMED TEAK ANTHRACITE  
L55 X W55 X H38 CM



**WABI COFFEE TABLE**  
G651-ANT (P. 32)

RECLAIMED TEAK ANTHRACITE  
L190 X W70 X H38 CM



**COFFEE TABLE DAY MEDIUM**  
G713M-ABR-WOOD (P. 12-13, 104, 106-107)

TEAK AUTHENTIC BROWN  
Ø100 X H32 CM



**COFFEE TABLE DAY LARGE**  
G713L-ABR-WOOD (P. 26, 175)

TEAK AUTHENTIC BROWN  
Ø141 X H32 CM



**SIDE TABLE PEBBLE LARGE**  
G663L-ANT (P. 103)

TEAK ANTHRACITE  
L65 X W51 X H35 CM



**SIDE TABLE DOBLO SMALL**  
G714S-NAT (P. 114)

TEAK ROOT NATURAL GREY  
L33 X W33 X H31 CM

**SIDE TABLE DOBLO MEDIUM**  
G714M-NAT(P. 114)

TEAK ROOT NATURAL GREY  
L33 X W33 X H37 CM

**SIDE TABLE DOBLO LARGE**  
G714L-NAT (P. 114)

TEAK ROOT NATURAL GREY  
L33 X W33 X H44 CM



**ROUND SIDE TABLE PHIL SMALL**  
G653S-ANT (P. 38-39, 109)

RECLAIMED TEAK ANTHRACITE  
Ø50 X H45 CM

**ROUND SIDE TABLE PHIL MEDIUM**  
G653M-ANT (P. 38-39, 109)

RECLAIMED TEAK ANTHRACITE  
Ø65 X H30 CM

**ROUND SIDE TABLE PHIL LARGE**  
G653L-ANT (P. 38-39, 109)

RECLAIMED TEAK ANTHRACITE  
Ø80 X H38 CM



**ROUND SIDE TABLE PHIL SMALL**  
G653S-AUT (P. 36-37, 48-49, 108)

RECLAIMED TEAK AUTHENTIC GREY  
Ø50 X H45 CM

**ROUND SIDE TABLE PHIL MEDIUM**  
G653M-AUT (P. 48-49, 108)

RECLAIMED TEAK AUTHENTIC GREY  
Ø65 X H30 CM

**ROUND SIDE TABLE PHIL LARGE**  
G653L-AUT (P. 48-49, 108)

RECLAIMED TEAK AUTHENTIC GREY  
Ø80 X H38 CM



**COFFEE TABLE CUMI SMALL**  
G063S-NAT (P. 115)

TEAK ROOT NATURAL GREY  
L30 X W30 X H45 CM

**COFFEE TABLE CUMI MEDIUM**  
G063M-NAT (P. 115)

TEAK ROOT NATURAL GREY  
L40 X W30 X H70 CM

**COFFEE TABLE CUMI LARGE**  
G063L-NAT (P. 115)

TEAK ROOT NATURAL GREY  
L50 X W60 X H100 CM



**LOW TABLE SAMBA SMALL**  
G477S-NAT

TEAK ROOT NATURAL GREY  
Ø50 X H28 CM

**LOW TABLE SAMBA LARGE**  
G477L-NAT

TEAK ROOT NATURAL GREY  
Ø50 X H35 CM



**COFFEE TABLE ROOT BALL**  
G062-NAT

TEAK ROOT NATURAL GREY  
Ø60 X H40 CM



**COFFEE TABLE ROOT CYLINDER**  
G064-NAT

TEAK ROOT NATURAL GREY  
Ø30 X H40 CM



**COFFEE TABLE ONLY SMALL**

G367S-FUM (P. 172)

RECLAIMED TEAK FUME  
Ø45 X H45 CM

**COFFEE TABLE ONLY LARGE WITH DOORS**

G367L-FUM (P. 172)

RECLAIMED TEAK FUME  
Ø60 X H40 CM



**CONSOLE ARCHIE**

G571-DAB (P. 16-17, 30-31)

RECLAIMED WOOD ORIGINAL AGED PATINE  
L240 X W45 X H85 CM



**CONSOLE ROOT**

G060-NAT

TEAK ROOT NATURAL GREY  
L130 X W35 X H70 CM



**CONSOLE ROOT**

G060-FUM (P. 100)

TEAK ROOT FUME  
L130 X W35 X H70 CM



**CONSOLE DRAKE**

G321-AUT (P. 98)

RECLAIMED TEAK AUTHENTIC GREY  
L210 X W53 X H86 CM



**CONSOLE CHRISTO**  
G320-FUM (P. 12-13, 104-105)

RECLAIMED TEAK FUME  
L220 X W48 X H86 CM



**CONSOLE RUBY**  
G242-NAT (P. 101)

TEAK ROOT NATURAL GREY  
L30 X W30 X H90 CM



**SQUARE CONSOLE ZORBA SMALL**  
G161-FUM

INCL. STONE TOP  
RECLAIMED TEAK FUME  
L30 X W30 X H90 CM



**SQUARE CONSOLE ZORBA LARGE**  
G162-FUM (P. 97)

INCL. STONE TOP  
RECLAIMED TEAK FUME  
L40 X W40 X H90 CM



**RECTANGULAR CONSOLE ZORBA**  
G160-FUM

INCL. STONE TOP  
RECLAIMED TEAK FUME  
L70 X W30 X H90 CM



**BOOKSHELF SHELVEY**  
G599-NAT

TEAK NATURAL GREY  
L105 X W35 X H28 CM



**BOOKSHELF SHELVEY**  
G599-ANT (P. 116-117)

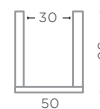
TEAK ANTHRACITE  
L105 X W35 X H28 CM



**PLANTER BASKET NELSON SMALL**  
G677S-CL (P. 39, 118)

CL RATTAN DARK  
Ø50 X H50 CM

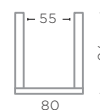
Unpeeled rattan makes the basket darker and stronger.



**PLANTER BASKET NELSON LARGE**  
G677L-CL (P. 39, 90, 119)

CL RATTAN DARK  
Ø80 X H70 CM

Unpeeled rattan makes the basket darker and stronger.



**DOG BED MAX INCL. CUSHION**  
G597-ANT (P. 110)

TEAK ANTHRACITE  
CUSHION QUICK DRY FOAM  
FABRIC KNELIN 02  
L100 X W70 X H30 CM



**SHELF GEORGES**  
G598-AUT (P. 62-63)  
  
TEAK AUTHENTIC GREY  
L125 X W35 X H200 CM



**SHELF GEORGES**  
G598-ANT  
  
TEAK ANTHRACITE  
L125 X W35 X H200 CM



**MIRROR BOWIE**  
G373-FUM  
  
RECLAIMED TEAK FUME  
W45 X D8 X H150 CM



**MIRROR BOLD SQUARE**  
G739S  
  
ALUMINIUM BLACK MAT  
W83 X D13 X H90 CM



**MIRROR BOLD RECTANGULAR**  
G739R  
  
ALUMINIUM BLACK MAT  
W43 X D13 X H110 CM



**MIRROR BOLD RECTANGULAR LARGE**  
G739RL (P. 46)  
  
ALUMINIUM BLACK MAT  
W100 X D8 X H200 CM



**COAT RACK**  
G466-FUM (P. 111)  
  
RECLAIMED TEAK FUME /  
LAVASTONE  
Ø40 X H190 CM



**THROW CAMEL-BLACK**  
G615

L200 X W153 CM



**THROW SAND**  
G618 (P. 38-39, 122)

L186 X W144 CM



**THROW OATMEAL**  
G621 (P. 123)

L195 X W144 CM



**THROW BEIGE**  
G627 (P. 40-41)

L180 X W147 CM



**THROW CAMEL**  
G624

L180 X W147 CM





**DECO CUSHION INDOOR  
40X40 CM**  
G382-  
CAT A / B / C / D / E / F / G

L40 X W40 CM



**DECO CUSHION INDOOR  
45X45 CM**  
G3831-  
CAT A / B / C / D / E / F / G

L45 X W45 CM



**DECO CUSHION INDOOR  
50X50 CM**  
G383-  
CAT A / B / C / D / E / F / G

L50 X W50 CM



**DECO CUSHION INDOOR  
60X60 CM**  
G384-  
CAT A / B / C / D / E / F / G

L60 X W60 CM



**DECO CUSHION INDOOR  
60X40 CM**  
G385-  
CAT A / B / C / D / E / F / G

L60 X W40 CM



**DECO CUSHION INDOOR  
80X60 CM**  
G386-  
CAT A / B / C / D / E / F / G

L80 X W60 CM



**RECTANGULAR RUG CASTOR**

G732-NAT (P. 127)

HAND-WOVEN ROPE JUTE NATURAL  
L400 X W300 CM



**RECTANGULAR RUG NIMROD**

G734-RECT (P. 76-77, 124, 126)

HAND-WOVEN WOOL BEIGE  
L350 X W250 CM



**RECTANGULAR RUG NOMAD**

G735-RECT-AM (P. 124)

HAND-WOVEN WOOL & JUTE AMBER  
L350 X W250 CM



**RECTANGULAR RUG NOMAD**

G735-RECT-BR (P. 124)

HAND-WOVEN WOOL & JUTE DARK BROWN  
L350 X W250 CM



**RECTANGULAR RUG CASTOR**

G732-GR (P. 127)

HAND-WOVEN ROPE JUTE PETROL GREEN  
L400 X W300 CM



**ROUND RUG NIMROD**

G734-ROUND (P. 125)

HAND-WOVEN WOOL BEIGE  
Ø320 CM



**ROUND RUG NOMAD**

G735-ROUND-AM (P. 125)

HAND-WOVEN WOOL & JUTE AMBER  
Ø320 CM



**ROUND RUG NOMAD**

G735-ROUND-BR (P. 125)

HAND-WOVEN WOOL & JUTE DARK BROWN  
Ø320 CM



## CARE & USE

We believe in the beauty of nature and the wonderful effect the passage of time has on our collection. Yet some regular maintenance of your furniture and decorative items is recommended.

Our Care & Use manuals offer you useful information on how to keep your GOMMAIRE products in optimal condition.

Should you have additional questions, please contact your local GOMMAIRE retailer or our Customer Service Department.

## INDOOR WOOD COLLECTION

The GOMMAIRE indoor wood collection is made of teak wood, teak root structures and French oak. The typical inhouse developed patina colours, such as authentic grey and fume are signature GOMMAIRE finishes, which are applied by hand during the production process. The wood has not been treated to prevent staining, colour changes and weathering. The following information will help you understand, maintain, and protect your furniture.

Solid teak wood is a natural material with its own characteristics and variations in structure and colour that can change over time. Furthermore, wood is sensitive to large differences in humidity and temperature. Therefore, we recommend keeping both conditions as stable as possible. The ideal relative humidity is about 40-60% and the optimal room temperature should be around 20° Celsius. If these conditions cannot be met, cracks, fissures and wood bendings could appear. However, the natural changes that occur are not only desirable but also align perfectly with the core philosophy of GOMMAIRE. When exposed to daylight, the wood becomes more beautiful over time. Please consider that if your furniture is placed directly behind a window, it could heat up and cracks could appear more easily. To help the table from drying out, you can use a damp cloth occasionally to bring moisture back into the table.

When moving the wooden furniture around, make sure to always lift and never slide it to prevent breakage. Furniture should always be placed on a flat surface. In situations where achieving a perfectly level surface is not feasible, our tables and side tables come equipped with adjustable furniture levellers.







## GENERAL MAINTENANCE

After unpacking your furniture piece, use a damp cloth to remove dust and any white residue left by the packaging and overseas transport. The wooden surface of our teak wood and French oak can be cleaned with water and natural soap at any given time. Always make sure to treat the entire surface, as local treatments will always remain visible.

### BLACK WOOD OIL

Our wood oil is a water-based wood oil used for indoor wooden furniture. This product provides the furniture piece with a protective layer to prevent certain stains and avoid greying. After applying the oil, the surface is intended to offer a certain level of water and dirt resistance. Additionally, the oil treatment may aid in warding off general wood deterioration. You can repeat the treatment when the effect starts to diminish.

#### How to use

The oil is to be stirred thoroughly before use. Achieve the desired effect by applying a thin and even coat of oil to the wooden surface, either using a brush or a cloth. It's important to note that each method yields a distinct outcome. When using a brush, the wood will acquire a rich, deep black hue, while applying the oil with a cloth it will result in a lighter and more nuanced appearance, similar to our anthracite finish. Remove any excess oil from the surface and from joints and grooves, using clean cotton cloths within a maximum of 5 minutes. Let the wood dry for at least 24 hours in a non-humid environment before using it again.

For all wooden indoor furniture with an oak and natural grey finish, you can also use the G-SPOTSTOP and the G-PROTECTOR for spot removal and added protection.



## INDOOR FABRICS

The GOMMAIRE collection showcases top-tier indoor fabrics renowned for their exceptional quality. These fabrics are of Belgian, Italian, and French origin.

The following information will help you understand, maintain, and protect your indoor fabrics.

### ABOUT THE FABRICS

Our indoor fabrics are carefully chosen for upholstered furniture and deco cushions, ensuring the highest quality. Each fabric is expertly handcrafted in Europe, ensuring exceptional attention to detail and an unparalleled level of artistry. From 100% natural fibres to premium synthetic blends, our collection offers diverse materials to cater to your unique preferences.

To ensure the longevity and pristine condition of both the fabrics and furniture pieces, we recommend specialised furniture cleaning services, like dry cleaning.

For tips on stain removal and other maintenance advice, please scan the QR code below, refer to our care and use page and find all information on our indoor and outdoor fabrics.





ALSO AVAILABLE



OUTDOOR 2024



DECORATION & ACCESSORIES 2024

# GENERAL TERMS & CONDITIONS OF GOMMAIRE NV

## Article 1

The general terms and conditions of Gommaire NV always take precedence over those of the customer, and constitute an integral part of the agreement, even if the order and/or general terms and conditions of the customer would state otherwise. The general terms and conditions of the customer are not enforceable against Gommaire NV, regardless of their designation and/or whether they (later) appear on order forms, order confirmations or other documents of the customer.

## Article 2

2.1 Placing an order is always an unilateral offer to contract on the part of the customer, even if this order is in response to an offer by Gommaire NV and/or is indicated on an order form (PO) of Gommaire NV and/or signed by an employee or representative (agent) of Gommaire NV. Orders as well as any other obligations recorded/entered into by its agents, representatives and/or employees shall only be deemed accepted by Gommaire NV after written confirmation of acceptance (signature) by the management of Gommaire NV, which is not required to justify a possible refusal.

2.2 Photographs, drawings, illustrations, dimensions, samples (among others of colours, materials), technical specifications, and the like are provided by Gommaire NV for information purposes only and are approximate indications for which Gommaire NV is liable only if it did not take all reasonable care due to serious or deliberate error.

## Article 3

3.1 The delivery dates specified on offers, (final) order confirmations/acceptances and other documents of Gommaire NV are only indicative and not strictly applicable. The customer may in no circumstances invoke non-compliance with stated deadlines to claim damages or dissolution of the agreement, unless the lateness is exclusively the result of gross negligence or wilful misconduct on the part of Gommaire NV.

3.2 The goods are delivered ex warehouse, with the risk transferring to the customer as soon as they leave the warehouse, even if Gommaire NV handles transportation and/or insurance (on behalf of the customer).

3.3 The customer commits himself with respect to the goods purchased from Gommaire NV :

- (I) that he will not advertise and/or commercialize the same via online platforms as Amazon.com, Bol.com (not limitative examples).
- (II) that he will only advertise the same on his own website with the agreement of Gommaire NV and in compliance with the directives of the latter, which may from time to time be adapted with prior notice.
- (III) that he will never commercialize the same via his own website.

## Article 4

The customer acknowledges that Gommaire NV is the exclusive owner of all copyrights, creations and/or any other intellectual property rights related to the delivered goods, materials and services.

## Article 5

5.1 All invoices issued by Gommaire NV are payable in cash unless different payment terms are accepted by Gommaire NV. In any case, all invoices issued by Gommaire NV must be paid in full before delivery/pick-up.

5.2 Payments shall be made to Gommaire NV at Antwerp (B). Any amount that is not paid to Gommaire NV in a timely manner will by operation of law and without prior notice be increased by fixed irreducible damage compensation equal to 10% of the outstanding amount, as well as by default interest equal to the interest rate foreseen in the Act of 2 August 2002 on combating late payments in commercial transactions calculated on the amount owed.

5.3 The late payment of one amount to Gommaire NV shall by operation of law and without notice result in all outstanding, not yet payable amounts owed by the customer in question becoming immediately due and payable in full, and Gommaire NV, without being obliged to pay any damage compensation, shall have the right to suspend further delivery and/or production for the customer in question until the latter has settled all outstanding amounts, and pending orders have been paid in advance.

5.4 In addition, in the case of late payment, Gommaire NV has by operation of law the right to dissolve the agreement without prior notice at the expense of the customer. This dissolution takes place by notification by registered letter. The dissolution takes effect on the date indicated on the proof of posting of the registered letter.

5.5 In the case of dissolution of an agreement by Gommaire NV at the expense of the customer, or in the case of unilateral breach of an agreement

by the customer before the delivery of the goods, materials and/or services in question, the customer shall automatically and without prior notice owe Gommaire NV a fixed damage compensation of 50% of the agreed price, without prejudice to the right of Gommaire NV to demonstrate and claim greater compensation. After delivery, this damage compensation amounts to 100% of the agreed price, without prejudice to the right of Gommaire NV to demonstrate and claim greater compensation. The parties agree that the above damage compensation constitutes the actual minimum damage suffered by Gommaire NV.

## Article 6

Any dispute concerning an invoice sent, must be notified to Gommaire NV by registered mail within eight days after the invoice date, under penalty of forfeiture.

## Article 7

7.1 Verification of (i) the conformity of the delivered goods, materials and/or services with respect to quantity, quality, characteristics, etc. , as well as (ii) inspection for apparent/visible defects in the delivered goods, materials and/or services shall take place at the time of the pick-up/delivery/performance. The corresponding complaints must, under penalty of forfeiture, be expressly stated on the pick-up slip/packing slip/service order and subsequently confirmed by registered letter to Gommaire NV within 24 hours after pick-up/delivery/performance. The partial use or resale of the delivered goods or services also implies acceptance of the entirety. Defects in a part thereof do not entitle the customer to reject the entire order.

7.2 Each complaint relating to a non-apparent defect must, under penalty of forfeiture, be sent to Gommaire NV by registered mail within eight days after discovery, and no later than one year from the pick-up/delivery/performance.

7.3 Within the usual tolerance limits for the sector, deviations in colour, materials, grain, dimensions, look, and the like [including those that are due to natural (raw) materials and/or modified production techniques on the part of the manufacturer] are allowed and shall not constitute grounds for (partial) refusal of the delivery, nor constitute grounds to claim damages and/or (partial) non-payment of the price.

7.4 If a complaint is substantiated, Gommaire NV - at its option - shall resolve the complaint by repair and/or replacement of the non-conforming part of the delivery, unless the end customer opts for a corresponding price reduction after return of the non-compliant part. Filing a complaint for any reason, even using the prescribed forms and within the prescribed deadlines, does not relieve the customer of its obligation to promptly pay by the due date. Except for its warranty obligations indicated above, Gommaire NV is not liable for direct and/or indirect damage (including loss of profit) resulting from defects in the goods sold and/or the services provided, except in cases of serious or deliberate error on its part.

## Article 8

The delivered goods, materials and services remain by operation of law fully owned by Gommaire NV until receipt by the latter of the full price of the goods, materials and services, eventually increased with any applicable interest, damage compensation and costs. As long as Gommaire NV retains ownership, the delivered goods, materials and services may never be used by the customer as a pledge or deposit for a claim of a third party.

## Article 9

If the customer suffers loss or damage as a result of an error by Gommaire NV for which its liability is not excluded, the latter shall be obliged to pay compensation in the amount of the invoice in question.

## Article 10

The possible invalidity of one or more provisions of these terms and conditions shall not affect the validity of the agreement, these general terms and conditions as such, or the other clauses contained therein. The parties undertake to immediately replace in good faith any invalid clause by another clause that is as close as possible to the intention of the clause being replaced.

## Article 11

In case of dispute, only the justice of the peace and courts of the registered office of Gommaire NV have jurisdiction. Only Belgian law is applicable to the agreements and disputes between the parties, with exception/exclusion of Belgian international private law . The application of the Vienna Convention on contracts for the international sale of goods is also explicitly excluded.



GOMMAIRE  
organic living





Schijnpoortweg 121  
2170 Antwerp Belgium

[info@gommaire.com](mailto:info@gommaire.com)  
[www.gommaire.com](http://www.gommaire.com)

